

3D HDMI Fiber Extender

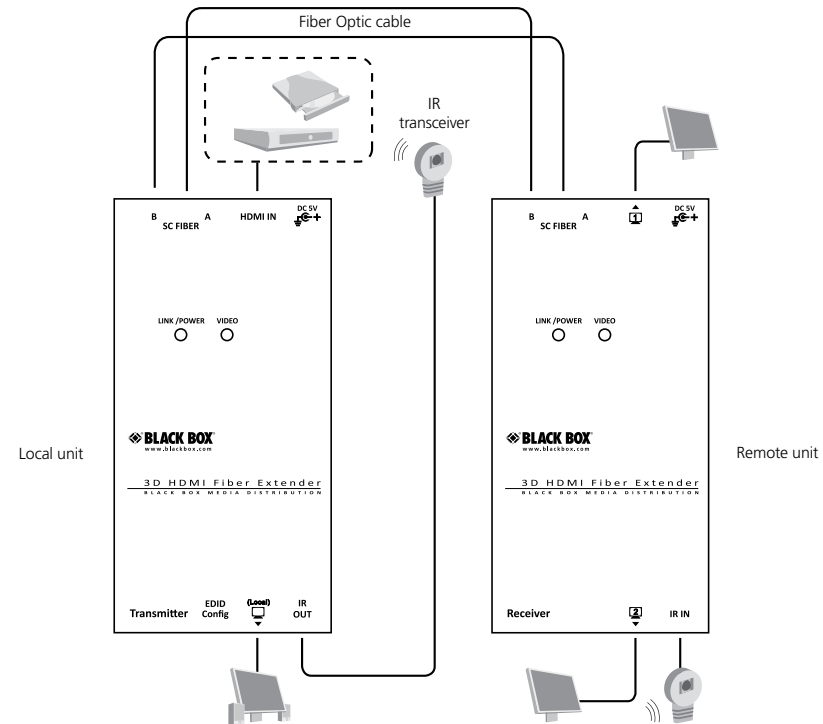
Extend video, 3D HD video and audio signals up to 1600 meters from an A/V source via multimode fiber optic cable.



FEATURES

- » Extends the video signal up to 2560 feet (800 m) or 5120 feet (1600 m) over multimode fiber.
- » Supports pure digital transmission with zero compression.
- » EDID Config function increases display capability.
- » Includes selectable EDID (audio) functions for multimedia system integration.
- » IR extending function is available (38 kHz only).
- » Complies with 3D-video, HDCP compliant, and Blu-ray ready.
- » Software and driver installation NOT required.

Sample installation



OVERVIEW

The 3D HDMI Fiber Extender consists of a Local and a Remote Unit. It enables users to extend 3D video up to 2560 feet (800 m) in 1080p resolution, or even longer—up to 5120 feet (1600m) in 1080i—from an AV source via duplex multimode fiber optic cable.

The HDMI digital display supports up to the maximum resolution of full HD (1920 x 1080)/WUXGA and (1920 x 1200)/UXGA (1600 x 1200), along with audio channels. The EDID Config function ensures the best compatibility, even when mixing different displays. EDID video and audio settings are easily configured from a push button.

Use the Fiber Extender in applications that require greater distance, high speed transmission, real-time high video resolution, security, and noise immunity. Its scalable design enables your enterprise to grow.

System Requirements

You will need to supply the following items:

- HDCP-compliant monitors with HDMI interface for the HDCP video source
- HDMI cable

TECH SPECS

3D Video Supported — Yes

Cable — 50/125- μ or 62.5/125 μ duplex multimode fiber optic cable
Extension Distance — 2560 feet (800 m), approx. 0.5 mi. (1080p);
5120 feet (1600 m), approx. 1 mi. (1080i)

User Controls — Local unit: (1) EDID config button;
Remote unit: None

Video Resolution (Maximum) — Full HD: (1920 x 1080),
WUXGA: (1920 x 1200)

Connectors — Local unit: Input: (1) HDMI, Output: (1) HDMI, (1) IR (infrared),
(1) SC fiber;

Remote unit: Input: (1) SC fiber, (1) IR (infrared), Output: (2) HDMI
Indicators — Each unit: (2) top-panel LEDs: (1) Video OK LED,
(1) Link OK/Power LED

Power Consumption (Maximum) — Per unit: 3 W
Size — Each unit: 0.9" H x 2.9" W x 5.9" D (2.4 x 7.5 x 15 cm)

Weight — Local unit: 1.3 lb. (0.57 kg);
Remote unit: 1.2 lb. (0.56 kg)



3D HDMI Fiber Extender
Left: Receiver;
Right: Transmitter

Technically Speaking

Installing duplex multimode fiber cable.

1. We recommend that you use OM3 multimode fiber optic cable (50/125 and 62.5/125) terminated with SC duplex connectors to interconnect the local unit and remote unit. The table below shows the specifications.

Duplex multimode fiber optic cable spec

Cable Diameter (micron)	50/125 μm	50/125 μm	62.5/125 μm	62.5/125 μm
Video signal	1080i	1080p	1080i	1080p
Maximum cable length (ft./m)	5120 ft. (1600 m)	2560 ft. (800 m)	1640 ft. (500 m)	820 ft. (250 m)

2. You may need to order appropriate cable lengths that conform to the application environment; however, the maximum cable length should not exceed 5120 feet (1600

meters), approx. 1 mi.; otherwise, signal degradation may occur (especially for video resolution).

- Do not exceed the cable bend radius. Fiber optic cable can break when kinked or bent too tightly, especially during pulling.
- Do not twist the cable. Twisting the cable can stress the fibers. Tension on the cable and pulling ropes can cause twisting.
- Don't look into the ends of any fiber optic cables. You might be exposed to invisible laser radiation.
- Follow the cable manufacturer's recommendations. Fiber optic cable is often custom-designed for the installation, and the manufacturer may have specific instructions on how to install it.

What's included

- ◆ 3D HDMI Fiber Extender Local Unit
- ◆ 3D HDMI Fiber Extender Remote Unit
- ◆ (2) power supplies with snap-on power plug
- ◆ IR collector
- ◆ IR emitter
- ◆ 2-m SC-SC duplex 50-/125-micron patch cord
- ◆ (2) sets of 4 foot pads
- ◆ (10) small screws
- ◆ (8) small rare earth magnets for mounting
- ◆ Quick Install Guide

Item

3D HDMI Fiber Extender

Code

VX-HDMI-FO