

DATA SHEET

BXAMGR-R2

BOXILLA® 4.6 KVM MANAGER

24/7 TECHNICAL SUPPORT AT 877.877.2269 OR VISIT BLACKBOX.COM



BLACK BOX®

OVERVIEW

BOXILLA 4.4 ENTERPRISE LEVEL KVM MANAGER DATA SHEET

INTRODUCTION

Boxilla® is an Enterprise Level KVM & AV/IT system management platform that works with Emerald Unified KVM (EMD4000T, EMD4000R, EMD2000SE-T, EMD2000SE-R, EMD2002SE-T, EMD2002SE-R, EMD200DV-T, EMD2000PE-T, EMD2000PE-R, EMD2002PE-T, EMD2002PE-R, EMD200DP-T, EMD2002PE-DP-T, EMD2000PE-DP-T, EMD2002SE-DP-T, EMD2000SE-DP-T), and DKM (multiple part numbers), EMS 1G/10G/100G Network Switches, EMD100USB, and Virtual Machine targets.

Boxilla provides a centralized, easy-to-use command center that gives you full monitoring and control of not just devices, but your entire system, all across the enterprise. Control user access. Monitor device status. Proactively diagnose and address network problems before they occur. Upgrade thousands of remote devices with one click, without ever leaving your seat, let alone the building.

FEATURES

- **COMMAND CENTER DASHBOARD PROVIDES AN INSTANT SNAPSHOT OF THE KVM NETWORK**
- **MANAGE AN UNLIMITED NUMBER OF ENDPOINTS IN YOUR ENTERPRISE-LEVEL IP-BASED KVM SYSTEM**
- **CONTROL DEPLOYMENTS, MONITORING, UPGRADES, TROUBLESHOOTING, SECURITY, STATUS—EVERYTHING!**
- **USE WITH EMERALD TO PROVIDE A HARDWARE-BASED, FUTURE-PROOF SOLUTION**
- **PROVIDES MANAGEMENT AND UNLIMITED DEVICE SCALABILITY FOR EMERALD UNIFIED KVM AND DKM KVM SYSTEMS WITH SELECT LICENSES**
- **DEPLOY, MONITOR, AND MANAGE LARGE-SCALE ENTERPRISE SYSTEMS**
- **PROVIDES DEVICE DISCOVERY AND CONFIGURATION, USER AUTHENTICATION**
- **CENTRALIZED UPGRADE OF ENDPOINT DEVICES**
- **PERFORMANCE MONITORING**
- **PROVIDES ACTIVE DIRECTORY USING LDAP/LDAPS WITH SUPPORT FOR USERS AND SECURITY GROUPS**
- **SUPPORTS CONFIGURATION OF DNS SERVER SETTINGS FOR ACTIVE DIRECTORY**
- **PUSHES ALERT INFORMATION TO SYSLOG/SECURE SYSLOG SERVER**
- **SUPPORTS NTP CLIENT**
- **UP TO 100 MANAGEMENT GROUPS**
- **SUPPORTS TIME ZONE CONFIGURATIONS**
- **INCLUDES SUPPORT FOR SMTP FOR SYSTEM ALERTS**
- **SUPPORTS SNMP FOR COLLECTING AND ORGANIZING SYSTEM INFORMATION**
- **ZONES ENABLE THE ADMINISTRATOR TO SETUP UNIQUE ZONES (OR GROUPS) OF CONNECTIONS AND USERS SO THAT A LARGE SYSTEM CAN BE MORE EASILY MANAGED.**
- **SUPPORTS INTEROPERABILITY AMONG ALL EMERALD DEVICES**
- **ENABLES BONDING OF ENDPOINTS**
- **SUPPORTS DUAL STREAM CONNECTIONS TO 4K TARGETS TO ALLOW ANY RECEIVER ACCESS**
- **SUPPORTS ENDPOINT LED IDENTIFICATION TO QUICKLY FIND ANY PHYSICAL ENDPOINT**
- **SUPPORTS TLS 1.2**



SPECIFICATIONS

BOXILLA 4.4 ENTERPRISE LEVEL KVM MANAGER DATA SHEET

SPECIFICATIONS FOR BOXILLA – ENTERPRISE LEVEL KVM MANAGER (BXAMGR-R2)	
PROCESSOR SYSTEM	
FORM FACTOR	1U rackmount
ETHERNET	
GBE ETHERNET	(2) RJ-45 GbE ports
I/O	
USB	(2) external USB 2.0 ports
SERIAL	(1) RJ-45 console port (COM1); (1) internal 5x2 pin header (COM2)
POWER SUPPLY	
POWER	AC input: 100–240 V, 50–60 Hz
WATTS	1U single 250 W ATX Power Supply
MECHANICAL AND ENVIRONMENTAL	
LCD MODULE	(1) 16 x 2 LCM (for future use)
KEYPAD	5-button keypad
LEDS	(1) Status LED (Yellow via programmable GPIO), (1) HDD LED (Red), (1) Power LED (Green)
OPERATING TEMPERATURE	32 to 104° F (0 to 40° C)
STORAGE TEMPERATURE	-4 to +167° F (-20 to +75° C)
HUMIDITY	10 to 85% relative humidity, non-operating, non-condensing
DIMENSIONS	1.7" H x 17.25" W x 17.5" D (4.3 x 43.8 x 44.5 cm)
WEIGHT	Unit: 12.6 lb. (5.7 kg)
APPROVALS AND COMPATIBILITY	
APPROVALS	CE, FCC, UL, RoHS2, BIS
COMPATIBILITY	Works with Emerald Unified KVM and Black Box DKM. Also supports Virtual Machine Connections using RDP/RemoteFX

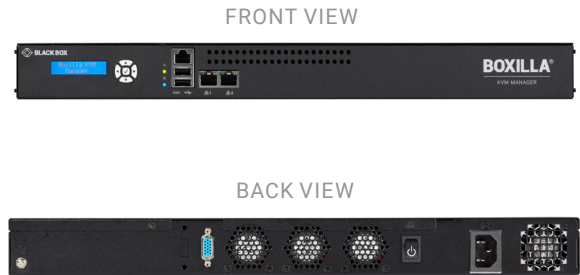


WHAT'S INCLUDED/APPLICATION DIAGRAM

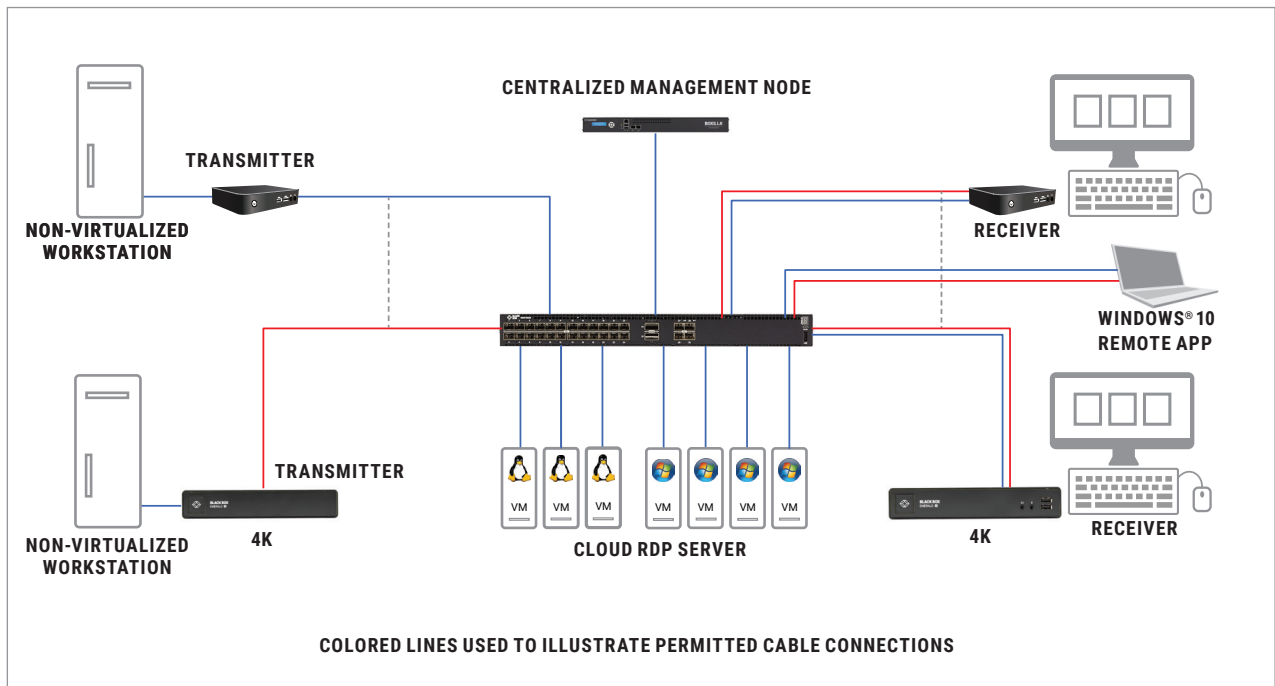
BOXILLA 4.4 ENTERPRISE LEVEL KVM MANAGER (BXAMGR-R2)

WHAT'S INCLUDED WITH THE BOXILLA (BXAMGR-R2)

- (1) BOXILLA – ENTERPRISE LEVEL KVM MANAGER
- (1) AC POWER CORD

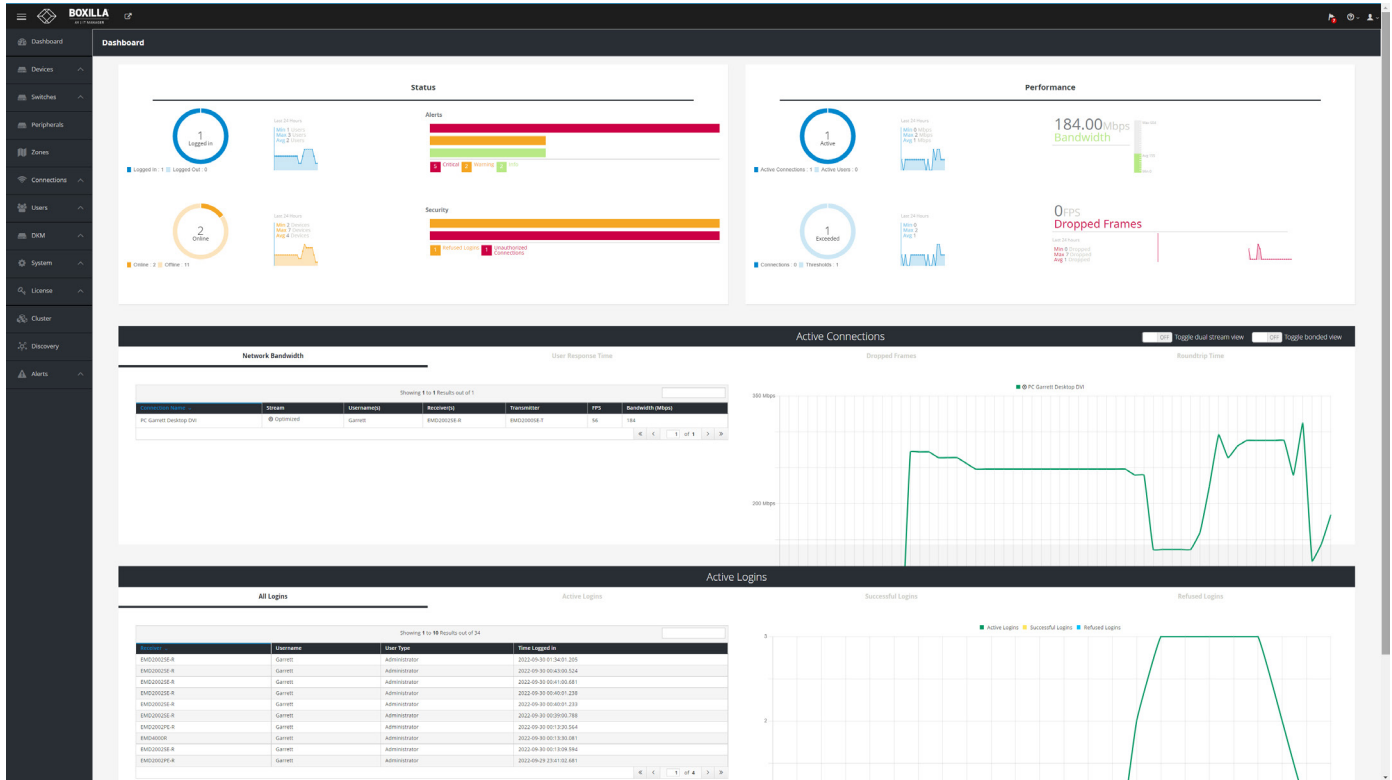


APPLICATION DIAGRAM



BOXILLA DASHBOARD

BOXILLA DASHBOARD



Dashboard drill-down:

Charting of key performance parameters:

- Bandwidth
- Frame rate
- User changes
- Power

Configure and Create:

- Manage domains
- Users
- Connections
- Systems
- Groups



