

Accessories

Mounting Kit

UNO-2000 Series VESA Mounting Kit UNO-2000G-VMKAE

Features

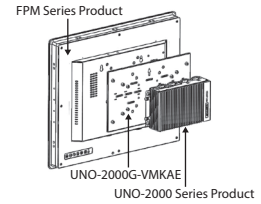
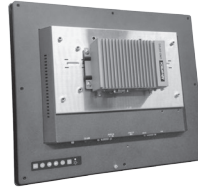
- Dimensions: 270 x 162 x 11 mm (W x H x D)
(Only extension kit)
- Supports VESA 75 and 100 monitor

Supported Models

- UNO: All UNO-2000 series
- FPM : All FPM 12", 15", 17", 19" models

Ordering Information

- UNO-2000G-VMKAE



UNO-2000 Series Din-Rail Mounting Kit UNO-2000G-DMKAE

Features

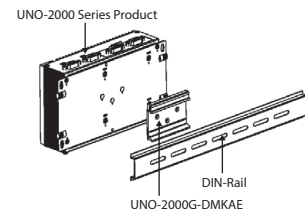
- Dimensions: 66 x 48.5 x 9 mm (W x H x D)

Supported Models

- UNO-2272G
- UNO-2362G
- UNO-2483G/2473G
- UNO-2483P

Ordering Information

- UNO-2000G-DMKAE



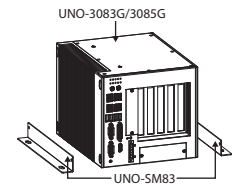
UNO-3000 Series Stand Mounting Kit UNO-SM83

Supported Models

- UNO-3083G
- UNO-3085G

Ordering Information

- UNO-SM-83



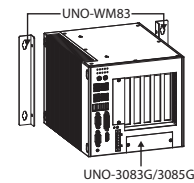
UNO-3000 Wall Mounting Kit UNO-WM83

Supported Models

- UNO-3083G
- UNO-3085G

Ordering Information

- UNO-WM83



Power Adapter/ Power Cord

	Industrial Grade			Commercial Grade	
	Part Number	Description		Part Number	Description
Power Adapter	1757002321	63WC to DC UNO series power adapter		PWR-249-AE	65W AC to DC power adapter
	Features <ul style="list-style-type: none"> ▪ Input voltage: 90 ~ 264 V_{AC}, 47 ~ 63 Hz ▪ Output Voltage: 24 V_{DC} ▪ Operating Temperature: -20 ~ 70°C 			PWR-244-AE	96W AC to DC power adapter
Power Cable	1702002600	Power Cable US Plug 1.8 M		1757002161	150W AC to DC power adapter
	1702002605	Power Cable EU Plug 1.8 M		Features <ul style="list-style-type: none"> ▪ Input voltage: 100 ~ 240 V_{AC}, 50 ~ 60 Hz ▪ Output Voltage: 19 V_{DC} ▪ Operating Temperature: 0 ~ 40°C 	
	1702031801	Power cable UK Plug 1.8 M		1700001524	Power cable 3-pin US type 1.8 M
	1700000596	Power Cable China/Australia Plug 1.8 M		170203183C	Power cable 3-pin EU type 1.8 M
				170203180A	Power cable 3-pin UK type 1.8 M
				-	-

UNO-IPS1560-AE

18-36 V_{DC} input/24 V_{DC} output, Uninterruptible Power Supply Module

NEW



Features

- Wide Range power input for 18-36 V_{DC}
- Metal enclosure supports different Book mounting position
- Status indicators for monitoring battery pack and input power
- Free software utility for configuration and monitoring
- Over discharging & charging protection to extend battery life
- Metal enclosure supports Wall mount, Stand mount & DIN Rail mount
- Intelligently trigger PC shut down when power outage



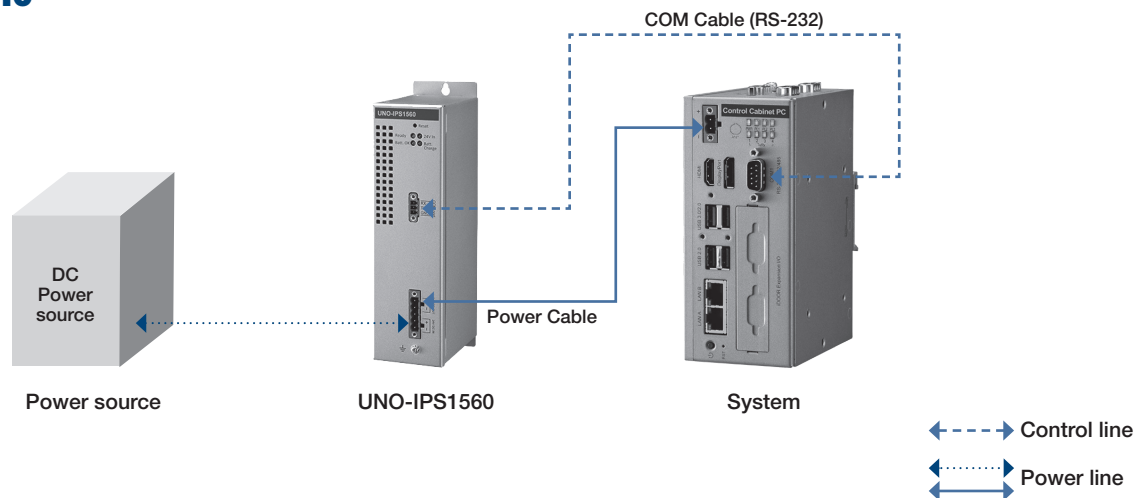
Introduction

Intelligent UPS serves as a temporary power supply during short breaks in power and enables safe system shutdown. It can protect PC from electrical damage and greatly reduce the risk of losing data. The IPS module serves as temporary power during a short interruption in power and allows a safe system shutdown.

Specifications

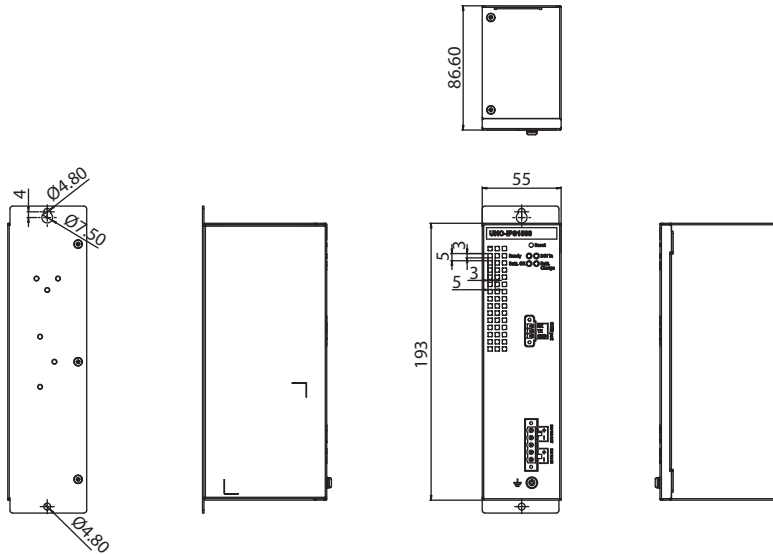
Input	Input Voltage	18 -36 Vdc
	Output	Output Voltage
Output	Typical output current	3A (72W)
	Battery	Battery Capacity
Battery	Cycle life	300 times of charge circle
	Protection	Short-circuit protection
Certification	EMC	CE, FCC
	Safety	UL, CB
Dimensions (W x D x H)		55 x 86.6 x 21.4 mm
Environment	Operating Temperature	0-45°C
	Storage Temperature	-20 ~ +50°C (less than 1 month)
		-20 ~ + 40°C (less than 3 months)
I/O Connectors	Monitor & Set IPS	RS-232

User Scenario



Dimensions

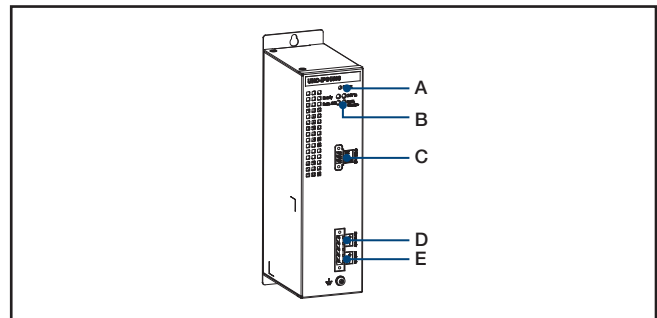
Unit: mm



Ordering Information

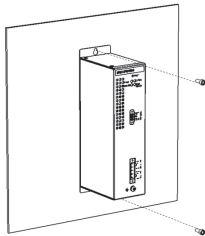
Part No.	Description
UNO-IPS1560-AE	18-36 V _{DC} input/24 V _{DC} output, Uninterruptible Power Supply Module (Including control & power cable)
UNO-2000G-DMKAE	DIN-Rail mounting kit for horizontal installation
UNO-2271G-DMKAE	DIN-Rail mounting kit for vertical installation

I/O Appearance

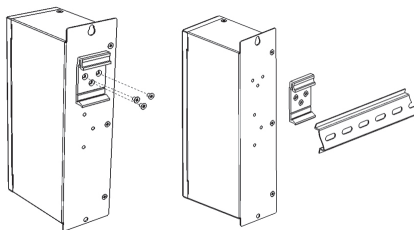


Mounting Illustration

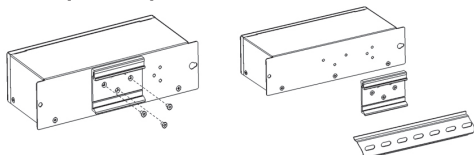
Book Mount



DIN-Rail Mount (Vertical)



DIN-Rail Mount (Vertical)



A: System Reset

B: LED indicators:

LED	Bright(ON)	Dark(OFF)	Blinking
24V In	DC_IN	DC_IN loss	DC_IN loss over 5 minute, input step 2 (1Hz blinking)
Ready	System ready	System not work	NA
Batt. OK	BAT ready	not detect BAT	1. Low Battery (Note 1) 2. BAT abnormal (0.5Hz blinking) (Note 2)
Batt. Charge	NA	BAT no charging	1. BAT charging (1Hz blink) 2. BAT abnormal (0.5Hz blinking) (Note 2)

Note :

- Low Battery
BAT ≤ 15%, BAT LED blinking, ≥ 16% return normal state
- BAT abnormal
BAT temperature ≥ 60°C, BAT & CHG LED blinking (0.5Hz), ≤ 55°C return normal state

C: RS-232

D: DC out (24V)

E: DC In (18-36V)

Accessories

UNO-1000 Series Accessories



UNO-FPM11

UNO-1100 Series VESA Mounting Kit

Features

- Dimensions: 270 x 162 x 11 mm (W x H x D) (Only extension kit)
- Supports VESA 75 and 100 monitor

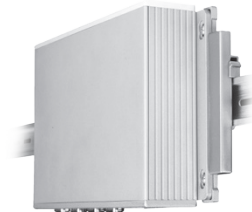
Supported Models

- UNO: All UNO-1100 series
- FPM: All FPM 12", 15", 17", 19" models

Ordering Information

- UNO-FPM11-BE

UNO-2000/2100 Series Accessories



UNO-DIN21

UNO-2100 Series DIN-rail Kit

Features

- Supports DIN-rail mounting (EN50022, 35 x 7.5 mm)

Supported Models

- All UNO-2100 series

Ordering Information

- UNO-DIN21-BE



UNO-FPM21

UNO-2000 Series VESA Mounting Kit

Features

- Dimensions: 270 x 162 x 11 mm (W x H x D) (Only extension kit)
- Supports VESA 75 and 100 monitor

Supported Models

- UNO: All UNO-2000 and 2100 series
- FPM: All FPM 12", 15", 17", 19" models

Ordering Information

- UNO-FPM21-AE



UNO-HD20

UNO-2000 HDD Expansion Kit

Features

- Dimensions: 188.8 x 106.5 x 21.0 mm (W x D x H) (Only extension kit)

Supported Models

- All UNO-2000 series

Ordering Information

- UNO-HD20-AE



UNO-PCM21

2 x PC/104 Expansion Kit for UNO-2170

Features

- Dimensions: 228 x 32 x 152 mm (W x H x D) (Only extension kit)
- Supports two PC/104 modules

Supported Models

- UNO-2170

Ordering Information

- UNO-PCM21-AE



UNO-PCM22

2 x PC/104 Expansion Kit for UNO-2100 Series

Features

- Dimensions: 228 x 32 x 152 mm (W x H x D) (Only extension kit)
- Supports two PC/104 modules

Supported Models

- UNO-2171, UNO-2172, UNO-2176, UNO-2182

Ordering Information

- UNO-PCM22-AE



UNO-PCM23

1 x PCI-104, 1 x PC/104+ Expansion Kit for UNO-2174A/2178A

Features

- Dimensions: 228 x 32 x 148 mm (W x H x D) (Only extension kit)
- Supports one PC/104+ and one PCI-104 modules

Supported Models

- UNO-2174A, UNO-2178A

Ordering Information

- UNO-PCM23-AE

UNO-3000 Series Accessories



UNO-PM70 Panel Mounting Kit for UNO-3000 Series

Supported Models

- UNO-3072L, UNO-3072, UNO-3074

Ordering Information

- UNO-PM70-AE



UNO-SM70 Stand Mounting Kit for UNO-3000 Series

Supported Models

- UNO-3072L, UNO-3072, UNO-3074

Ordering Information

- UNO-SM70-AE



UNO-WM72/WM74 Wall Mounting Kit for UNO-3072/L and UNO-3074

Supported Models

- UNO-3072/3072L (UNO-WM 72)
- UNO-3074 (UNO-WM74)

Ordering Information

- UNO-WM72-AE
- UNO-WM74-AE

Note: For UNO-3072L-C22BE and UNO-3074-P32CE wall mount requirements, please use the UNO-PM70-AE mounted on the back as a Wall Mounting kit.



UNO-PM80 Panel Mounting Kit for UNO-3082/3084

Supported Models

- UNO-3072LA, UNO-3072A, UNO-3074A, UNO-3082, UNO-3084

Ordering Information

- UNO-PM80-AE



UNO-SM80 Stand Mounting Kit for UNO-3082/3084

Supported Models

- UNO-3072LA, UNO-3072A, UNO-3074A, UNO-3082, UNO-3084

Ordering Information

- UNO-SM80-AE



UNO-WM80 Wall Mounting Kit for UNO-3082/3084/3072LA

Supported Models

- UNO-3072LA, UNO-3072A, UNO-3074A, UNO-3082, UNO-3084

Ordering Information

- UNO-WM80-AE



Expansion Kit USB x 2 for UNO-3000 Series

Supported Models

- UNO-3072LA, UNO-3072A, UNO-3074A, UNO-3082, UNO-3084

Ordering Information

- 9663308401E



Expansion Kit LPT x 1 for UNO-3000 Series

Supported Models

- UNO-3072LA, UNO-3072A, UNO-3074A, UNO-3082, UNO-3084

Ordering Information

- 9663308402E



Expansion Kit RS232 COM port x 2 and PS2 x 1 for UNO-3000 Series

Supported Models

- UNO-3072LA, UNO-3072A, UNO-3074A, UNO-3082, UNO-3084

Ordering Information

- 9663308403E

Power Adapter and Power Cord Solutions

Industrial Grade Power Adapter (Note: Only for UNO-1000/2000 series)



Features

- Input voltage: 90 ~ 264 V_{AC}, 47 ~ 63 Hz
- Output Voltage: 24 V_{DC}
- Operating Temperature: -20 ~ 70°C

Ordering Information

- 1702002600
- 1702031801
- 1702002605
- 1702031836
- 1757002321

Power cable US Plug 1.8 M
Power cable UK Plug 1.8 M
Power cable EU Plug 1.8 M
Power cable China/Australia Plug 1.8 M
63W AC to DC UNO series power adapter

Commercial Grade Power Adapter

Features

- Input voltage: 100 ~ 240 V_{AC}, 50 ~ 60 Hz
- Output Voltage: 19 V_{DC}
- Operating Temperature: 0 ~ 40°C

Ordering Information

- 1700001524
- 170203180A
- 170203183C
- 1757002682
- 1757002161
- PWR-244-AE

Power cable 3-pin US type 1.8 M
Power cable 3-pin UK type 1.8 M
Power cable 3-pin EU type 1.8 M
65W AC to DC power adapter
150W AC to DC power adapter
96W AC to DC power adapter

Accessories

UNO-1000 Series Accessories



UNO-FPM11

UNO-1100 Series VESA Mounting Kit

Features

- Dimensions: 270 x 162 x 11 mm (W x H x D) (Only extension kit)
- Supports VESA 75 and 100 monitor

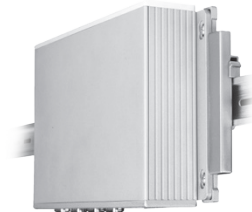
Supported Models

- UNO: All UNO-1100 series
- FPM: All FPM 12", 15", 17", 19" models

Ordering Information

- UNO-FPM11-BE

UNO-2000/2100 Series Accessories



UNO-DIN21

UNO-2100 Series DIN-rail Kit

Features

- Supports DIN-rail mounting (EN50022, 35 x 7.5 mm)

Supported Models

- All UNO-2100 series

Ordering Information

- UNO-DIN21-BE



UNO-FPM21

UNO-2000 Series VESA Mounting Kit

Features

- Dimensions: 270 x 162 x 11 mm (W x H x D) (Only extension kit)
- Supports VESA 75 and 100 monitor

Supported Models

- UNO: All UNO-2000 and 2100 series
- FPM: All FPM 12", 15", 17", 19" models

Ordering Information

- UNO-FPM21-AE



UNO-HD20

UNO-2000 HDD Expansion Kit

Features

- Dimensions: 188.8 x 106.5 x 21.0 mm (W x D x H) (Only extension kit)

Supported Models

- All UNO-2000 series

Ordering Information

- UNO-HD20-AE



UNO-PCM21

2 x PC/104 Expansion Kit for UNO-2170

Features

- Dimensions: 228 x 32 x 152 mm (W x H x D) (Only extension kit)
- Supports two PC/104 modules

Supported Models

- UNO-2170

Ordering Information

- UNO-PCM21-AE



UNO-PCM22

2 x PC/104 Expansion Kit for UNO-2100 Series

Features

- Dimensions: 228 x 32 x 152 mm (W x H x D) (Only extension kit)
- Supports two PC/104 modules

Supported Models

- UNO-2171, UNO-2172, UNO-2176, UNO-2182

Ordering Information

- UNO-PCM22-AE



UNO-PCM23

1 x PCI-104, 1 x PC/104+ Expansion Kit for UNO-2174A/2178A

Features

- Dimensions: 228 x 32 x 148 mm (W x H x D) (Only extension kit)
- Supports one PC/104+ and one PCI-104 modules

Supported Models

- UNO-2174A, UNO-2178A

Ordering Information

- UNO-PCM23-AE

UNO-3000 Series Accessories



UNO-PM70 Panel Mounting Kit for UNO-3000 Series

Supported Models

- UNO-3072L, UNO-3072, UNO-3074

Ordering Information

- UNO-PM70-AE



UNO-SM70 Stand Mounting Kit for UNO-3000 Series

Supported Models

- UNO-3072L, UNO-3072, UNO-3074

Ordering Information

- UNO-SM70-AE



UNO-WM72/WM74 Wall Mounting Kit for UNO-3072/L and UNO-3074

Supported Models

- UNO-3072/3072L (UNO-WM 72)
- UNO-3074 (UNO-WM74)

Ordering Information

- UNO-WM72-AE
- UNO-WM74-AE

Note: For UNO-3072L-C22BE and UNO-3074-P32CE wall mount requirements, please use the UNO-PM70-AE mounted on the back as a Wall Mounting kit.



UNO-PM80 Panel Mounting Kit for UNO-3082/3084

Supported Models

- UNO-3072LA, UNO-3072A, UNO-3074A, UNO-3082, UNO-3084

Ordering Information

- UNO-PM80-AE



UNO-SM80 Stand Mounting Kit for UNO-3082/3084

Supported Models

- UNO-3072LA, UNO-3072A, UNO-3074A, UNO-3082, UNO-3084

Ordering Information

- UNO-SM80-AE



UNO-WM80 Wall Mounting Kit for UNO-3082/3084/3072LA

Supported Models

- UNO-3072LA, UNO-3072A, UNO-3074A, UNO-3082, UNO-3084

Ordering Information

- UNO-WM80-AE



Expansion Kit USB x 2 for UNO-3000 Series

Supported Models

- UNO-3072LA, UNO-3072A, UNO-3074A, UNO-3082, UNO-3084

Ordering Information

- 9663308401E



Expansion Kit LPT x 1 for UNO-3000 Series

Supported Models

- UNO-3072LA, UNO-3072A, UNO-3074A, UNO-3082, UNO-3084

Ordering Information

- 9663308402E



Expansion Kit RS232 COM port x 2 and PS2 x 1 for UNO-3000 Series

Supported Models

- UNO-3072LA, UNO-3072A, UNO-3074A, UNO-3082, UNO-3084

Ordering Information

- 9663308403E

Power Adapter and Power Cord Solutions

Industrial Grade Power Adapter (Note: Only for UNO-1000/2000 series)



Features

- Input voltage: 90 ~ 264 V_{AC}, 47 ~ 63 Hz
- Output Voltage: 24 V_{DC}
- Operating Temperature: -20 ~ 70°C

Ordering Information

- 1702002600
- 1702031801
- 1702002605
- 1702031836
- 1757002321

Power cable US Plug 1.8 M
Power cable UK Plug 1.8 M
Power cable EU Plug 1.8 M
Power cable China/Australia Plug 1.8 M
63W AC to DC UNO series power adapter

Commercial Grade Power Adapter

Features

- Input voltage: 100 ~ 240 V_{AC}, 50 ~ 60 Hz
- Output Voltage: 19 V_{DC}
- Operating Temperature: 0 ~ 40°C

Ordering Information

- 1700001524
- 170203180A
- 170203183C
- 1757002682
- 1757002161
- PWR-244-AE

Power cable 3-pin US type 1.8 M
Power cable 3-pin UK type 1.8 M
Power cable 3-pin EU type 1.8 M
65W AC to DC power adapter
150W AC to DC power adapter
96W AC to DC power adapter