

DLT-V72 Series

Rugged X86-Based Vehicle-Mounted Terminal



Features

- 10.4/12.1" color TFT display
- Abrasion-resistant touchscreen
- IP66 rating for protection from dust and water ingress
- 5M3 certification for shock and vibration tolerance
- Wide operating temperature range (-30 ~ 50 °C/-22 ~ 122 °F) for extreme environments
- Optional uninterruptible power supply via backup battery (supports up to 20 minutes operation)
- Optional screen defroster, ideal for cold chain and cold storage applications
- Optional smart sensors for extended functions e.g. screen blanking for driving safety

Introduction

DLT-V72 is a rugged vehicle-mounted terminal designed for logistics applications and to provide maximum system uptime. The thin bezel design allows to fit it into the smallest vehicle cabinet. Through its compact design it does not block the drivers viewable area, hence it is reducing the risk of an accident. Powered by an Intel® Atom™ E3845 quad-core, 1.91 GHz, processor with 4 GB RAM, DLT-V72 supports a wide operating temperature range (-30 ~ 50 °C/-22 ~ 122 °F) to withstand operation in extreme industrial environments (from hot and humid, to dry freezer environments). The Advantech low-profile antenna offers excellent transmission capabilities in a compact form factor. Meanwhile the touchscreen with touch control ensures easy input and gloved operation.

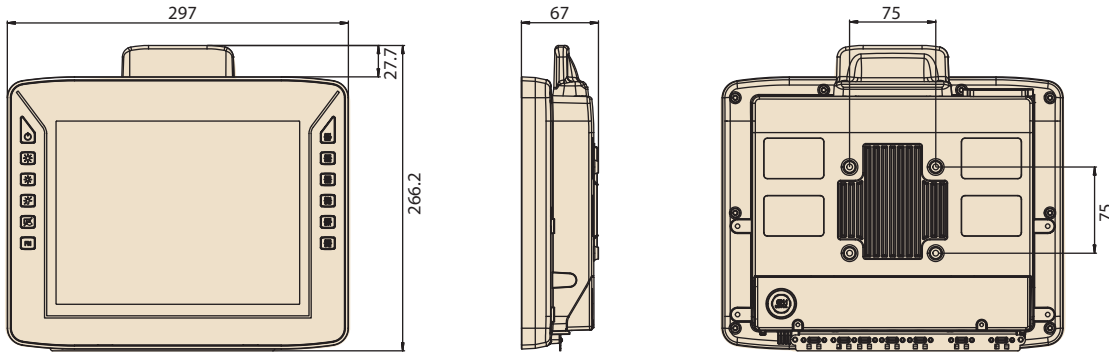
Specifications

System	CPU	Intel® Atom™ E3845 quad-core, 1.91 GHz, 4 GB RAM
	Memory	8GB - 256GB CFast
Dimensions	DLT-V7210	296.4 x 266.2 x 66.7 mm (11.67 x 10.48 x 2.63 in)
	DLT-V7212	334.4 x 294.4 x 68.7 mm (13.17 x 11.59 x 2.70 in)
Weight	DLT-V7210	3.7 kg (8 lb) without battery pack/antenna/accessories
	DLT-V7212	4.65 kg (10 lb) without battery pack/antenna/accessories
Housing		Completely sealed, fanless design made of coated aluminum
Display	DLT-V7210	10.4" XGA color TFT with 1024 x 768 resolution and 400 cd/m ² brightness
	DLT-V7212	12.1" XGA color TFT with 1024 x 768 resolution and 500 cd/m ² brightness
Touchscreen	Type	- Resistive touchscreen with optional screen defroster - Projective capacitive (P-CAP) touchscreen with multi-touch control
Control Buttons	Front Panel	12 x control buttons
Software	Operating System	Windows 10 IoT Enterprise, Windows 7 Pro, Windows Embedded Standard 7, Debian-based Linux, IGEL Linux, Android 7.1.2
	Emulations (Third-Party)	VT100, VT220, IBM 5250, TN 3270, Citrix Client®, Freefloat Access One
Communication	WLAN	WLAN IEEE 802.11 a/b/g/n/ac (optional)
	WWAN	WWAN (LTE, UMTS, HSPA+, GSM, GPRS, EDGE) (optional)
	LAN	Ethernet 10/100/1000 Mbit/s
	WPAN	Bluetooth 4.2 (optional)
Interfaces	Serial	2 x RS-232, COM1 with switchable 5 V _{DC} /RI
	USB	4 x USB 2.0 (Hi-Speed™) bootable, 1 x service USB 3.0 (Super-Speed™)
	External Antennas	1 x RSMA for WLAN, 1 x SMA for WWAN (optional)
Sensors		Accelerometer, Gyro (optional)
Audio		1 x integrated speaker (2W)
Power Supply		12/24/48 V _{DC} nominally Automatic Power On/Off function via vehicle ignition with optional UPS (20 minutes typical); battery life may vary according to load
Environmental	IP Rating	IP66 rating for the entire system
	Operating Temperature	-30 ~ 50 °C (-22 ~ 122 °F)
	Relative Humidity	10 to 90% at 40 °C (104 °F), non-condensing
	Shock/Vibration	5M3 (EN 60721-3-5) and MIL-STD 810F (US highway truck vibration exposure)
	Touchscreen Durability	IK 08
Certifications		CE Immunity Class A, Emission Class B/FCC Class B (for EU and USA), CCC (for China)

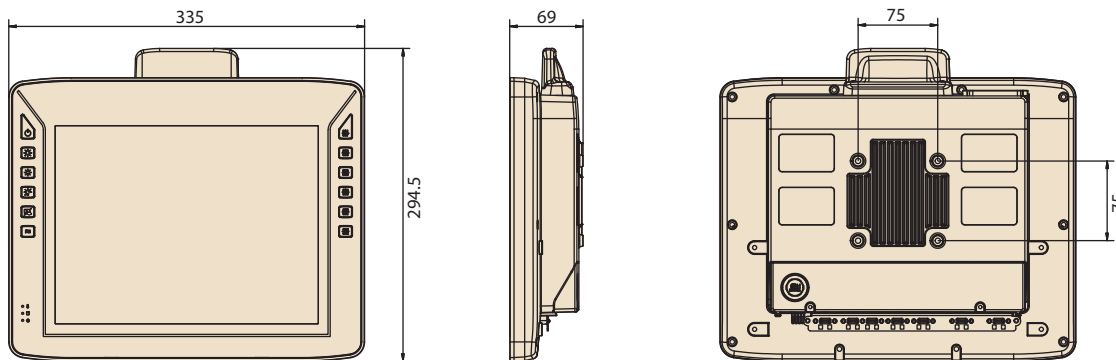
Dimensions

Unit: mm

DLT-V7210



DLT-V7212

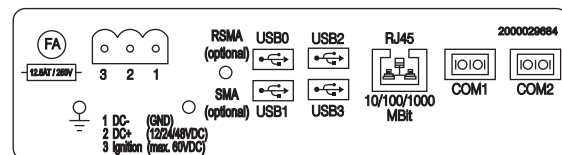


Optional Accessories

Part Number	Description
DL-MTK009	Mounting bracket mobile
DL-MTRM004	RAM-Mount Set, one arm, arm length 130mm
DL-MTRM003	RAM-Mount Set, one arm, arm length 215mm
DL-MTRM001	RAM-Mount Set, two arms, arm length 150mm

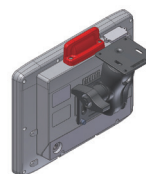
Further configurations on request!

I/O Connectors

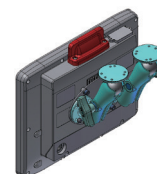


Mount Kit Options

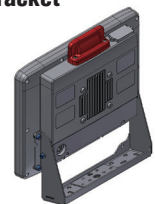
RAM-Mount Set
(one arm)



RAM-Mount Set
(two arms)



Mobile Mounting
Bracket



DLT-V7210 K DLT-V7210 KD

Rugged, X86-Based Vehicle-Mounted Terminal with Integrated Keyboard



Features

- Intel® Atom™ E3845 quad-core, 1.91 GHz, with 4 GB RAM
- 10.1" widescreen WXGA color TFT display with 1280 x 800 resolution and 500 cd/m² brightness
- Optional PCT defroster, ideal for cold chain and cold storage applications
- Impact-tolerant, abrasion-resistant projected capacitive touchscreen
- Rugged, IP65-rated design with 5M3 certification for shock and vibration tolerance
- Wide operating temperature range (-30 ~ 50 °C/-22 ~ 122 °F)
- Integrated keyboard for convenient operation
- Optional uninterruptible power supply
- Optional smart sensors for extended functions e.g. screen blanking for driving safety

Introduction

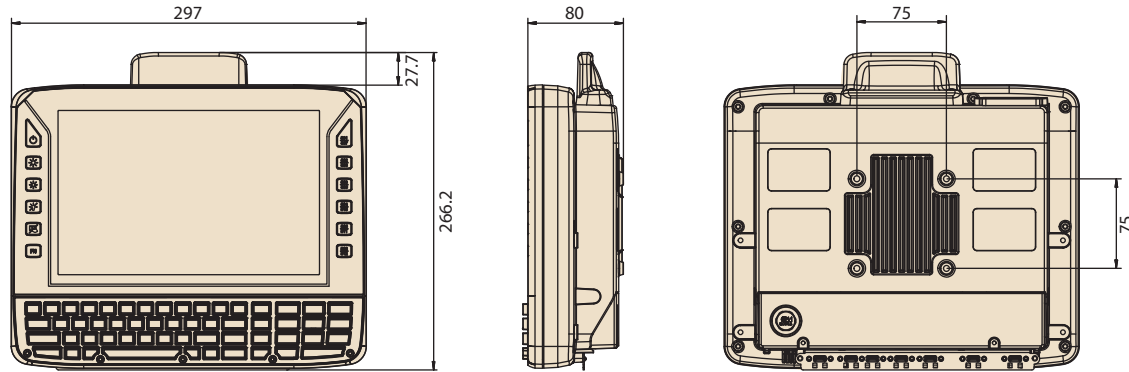
DLT-V7210 K series is a rugged vehicle-mounted terminal with integrated keyboard designed for logistics applications and to provide maximum system uptime. Powered by an Intel® Atom™ E3845 quad-core, 1.91 GHz, processor with 4 GB RAM, DLT-V7210 K series supports a wide operating temperature range (-30 ~ 50 °C/-22 ~ 122 °F) to withstand operation in extreme industrial environments. DLT-V7210 KD also offers PCT defroster, which is ideal for cold chain and cold storage applications. The low-profile antenna offers excellent transmission capabilities in a compact form factor. Furthermore, the integrated user-friendly keyboard offers convenient operation and efficient data input. Meanwhile, the 10.1" widescreen WXGA color TFT display with touch control allows easy input and configurable touch sensitivity ensures easy operation with gloves.

Specifications

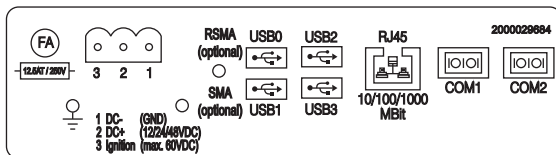
System	CPU	Intel® Atom™ E3845 quad-core, 1.91 GHz, with 4 GB RAM
	Memory	8Gb - 256GB CFast
Dimensions (W x H x D)	297.3 x 264.7 x 80 mm (11.7 x 10.42 x 3.15 in)	
Weight	3.7 kg (8.2 lb) without battery pack/accessories	
Housing	Coated aluminum with completely sealed, fanless design	
Display	10.1" widescreen WXGA color TFT display with 1280 x 800 resolution and 500 cd/m ² brightness	
Touchscreen	Type	Sunlight-readable PCT multi touchscreen with optional defroster function (touch sensitivity configurable for glove operation)
	Front Panel	12 x control buttons (6 of which are programmable)
Control Buttons/Keyboard	Keyboard	Full-size keyboard (55 keys) with number pad, illuminated keys, and changeable silicon mat; Supports on-site replacement Keyboard versions: DLT-V7210K(QWERTY,QWERTZ,AZERTY); DLT-V7210KD(QWERTY)
	Operating System	Windows 10 IoT Enterprise, Windows 7 Pro, WES7, Debian-based Linux, IGEL Linux, Android 7.1.2
Software	Emulations (Third-Party)	VT100, VT220, IBM 5250, TN 3270, Citrix Client®, Freefloat Access One
	WLAN	WLAN IEEE 802.11 a/b/g/n/ac (optional)
Communication	WWAN	WWAN (LTE, UMTS, HSPA+, GSM, GPRS, EDGE) (optional)
	LAN	Ethernet 10/100/1000 Mbit/s
	WPAN	Bluetooth 4.2 (optional)
I/O Interfaces	Serial	2 x RS-232, COM1 with switchable 5 V _{DC} /RI
	USB	4 x USB 2.0 (Hi-Speed™) bootable, 1 x service USB 3.0 (Super-Speed™)
	External Antennas	1 x RSMA for WLAN, 1 x SMA for WWAN (optional)
Sensors	Accelerometer, Gyro (optional)	
Audio	1 x integrated speaker	
Power Supply (Internal)	12/24/48 V _{DC} nominal voltage with automatic Power On/Off function via vehicle ignition and optional uninterruptible power supply (20 minutes typical); battery life may vary according to load	
Environmental	IP Rating	IP65 rating for the entire system
	Operating Temperature	-30 ~ 50 °C (-22 ~ 122 °F)
	Relative Humidity	10 to 90% at 40 °C (104 °F), non-condensing
	Shock/Vibration	5M3 (EN 60721-3-5) and MIL-STD 810F (US highway truck vibration exposure)
Certification	Touchscreen Durability	IK 08
	CE Immunity Class A, Emission Class B/FCC Class B (for EU and USA), CCC (for China)	

Dimensions

Unit: mm

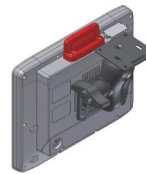


I/O Connectors

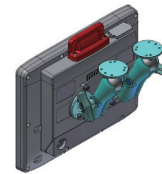


Mount Kit Options

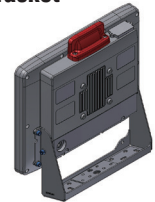
RAM-Mount Set
(one arm)



RAM-Mount Set
(two arms)



Mobile Mounting
Bracket



Optional Accessories

Part Number	Description
DL-MTK009	Mounting bracket mobile
DL-MTRM004	RAM-Mount Set, one arm, arm length 130mm
DL-MTRM003	RAM-Mount Set, one arm, arm length 215mm
DL-MTRM001	RAM-Mount Set, two arms, arm length 150mm

Further configurations on request!

DLT-V7210 K DLT-V7210 KD

Rugged, X86-Based Vehicle-Mounted Terminal with Integrated Keyboard



Features

- Intel® Atom™ E3845 quad-core, 1.91 GHz, with 4 GB RAM
- 10.1" widescreen WXGA color TFT display with 1280 x 800 resolution and 500 cd/m² brightness
- Optional PCT defroster, ideal for cold chain and cold storage applications
- Impact-tolerant, abrasion-resistant projected capacitive touchscreen
- Rugged, IP65-rated design with 5M3 certification for shock and vibration tolerance
- Wide operating temperature range (-30 ~ 50 °C/-22 ~ 122 °F)
- Integrated keyboard for convenient operation
- Optional uninterruptible power supply
- Optional smart sensors for extended functions e.g. screen blanking for driving safety

Introduction

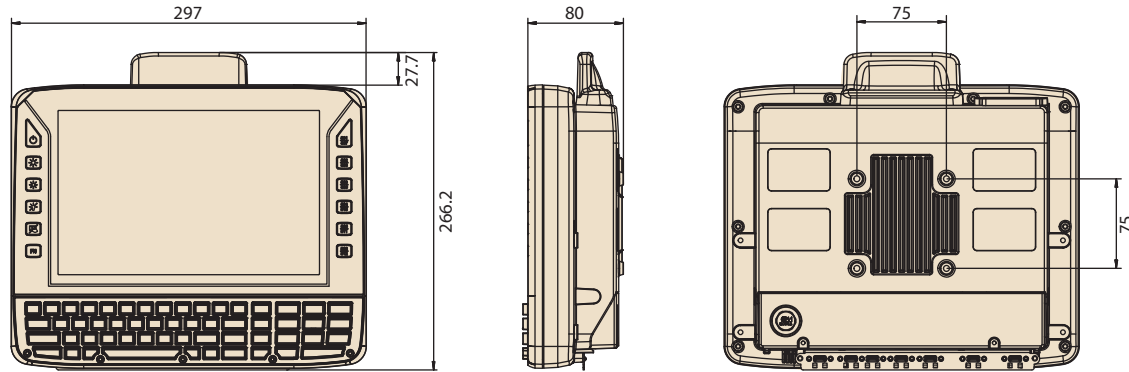
DLT-V7210 K series is a rugged vehicle-mounted terminal with integrated keyboard designed for logistics applications and to provide maximum system uptime. Powered by an Intel® Atom™ E3845 quad-core, 1.91 GHz, processor with 4 GB RAM, DLT-V7210 K series supports a wide operating temperature range (-30 ~ 50 °C/-22 ~ 122 °F) to withstand operation in extreme industrial environments. DLT-V7210 KD also offers PCT defroster, which is ideal for cold chain and cold storage applications. The low-profile antenna offers excellent transmission capabilities in a compact form factor. Furthermore, the integrated user-friendly keyboard offers convenient operation and efficient data input. Meanwhile, the 10.1" widescreen WXGA color TFT display with touch control allows easy input and configurable touch sensitivity ensures easy operation with gloves.

Specifications

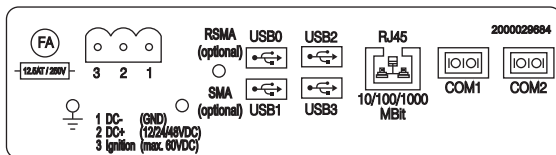
System	CPU	Intel® Atom™ E3845 quad-core, 1.91 GHz, with 4 GB RAM
	Memory	8Gb - 256GB CFast
Dimensions (W x H x D)	297.3 x 264.7 x 80 mm (11.7 x 10.42 x 3.15 in)	
Weight	3.7 kg (8.2 lb) without battery pack/accessories	
Housing	Coated aluminum with completely sealed, fanless design	
Display	10.1" widescreen WXGA color TFT display with 1280 x 800 resolution and 500 cd/m ² brightness	
Touchscreen	Type	Sunlight-readable PCT multi touchscreen with optional defroster function (touch sensitivity configurable for glove operation)
	Front Panel	12 x control buttons (6 of which are programmable)
Control Buttons/Keyboard	Keyboard	Full-size keyboard (55 keys) with number pad, illuminated keys, and changeable silicon mat; Supports on-site replacement Keyboard versions: DLT-V7210K(QWERTY,QWERTZ,AZERTY); DLT-V7210KD(QWERTY)
	Operating System	Windows 10 IoT Enterprise, Windows 7 Pro, WES7, Debian-based Linux, IGEL Linux, Android 7.1.2
Software	Emulations (Third-Party)	VT100, VT220, IBM 5250, TN 3270, Citrix Client®, Freefloat Access One
	WLAN	WLAN IEEE 802.11 a/b/g/n/ac (optional)
Communication	WWAN	WWAN (LTE, UMTS, HSPA+, GSM, GPRS, EDGE) (optional)
	LAN	Ethernet 10/100/1000 Mbit/s
	WPAN	Bluetooth 4.2 (optional)
I/O Interfaces	Serial	2 x RS-232, COM1 with switchable 5 V _{DC} /RI
	USB	4 x USB 2.0 (Hi-Speed™) bootable, 1 x service USB 3.0 (Super-Speed™)
	External Antennas	1 x RSMA for WLAN, 1 x SMA for WWAN (optional)
Sensors	Accelerometer, Gyro (optional)	
Audio	1 x integrated speaker	
Power Supply (Internal)	12/24/48 V _{DC} nominal voltage with automatic Power On/Off function via vehicle ignition and optional uninterruptible power supply (20 minutes typical); battery life may vary according to load	
Environmental	IP Rating	IP65 rating for the entire system
	Operating Temperature	-30 ~ 50 °C (-22 ~ 122 °F)
	Relative Humidity	10 to 90% at 40 °C (104 °F), non-condensing
	Shock/Vibration	5M3 (EN 60721-3-5) and MIL-STD 810F (US highway truck vibration exposure)
	Touchscreen Durability	IK 08
Certification	CE Immunity Class A, Emission Class B/FCC Class B (for EU and USA), CCC (for China)	

Dimensions

Unit: mm

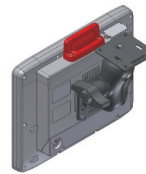


I/O Connectors

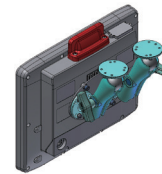


Mount Kit Options

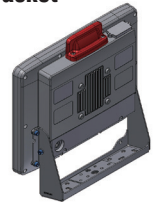
**RAM-Mount Set
(one arm)**



**RAM-Mount Set
(two arms)**



**Mobile Mounting
Bracket**



Optional Accessories

Part Number	Description
DL-MTKT009	Mounting bracket mobile
DL-MTRM004	RAM-Mount Set, one arm, arm length 130mm
DL-MTRM003	RAM-Mount Set, one arm, arm length 215mm
DL-MTRM001	RAM-Mount Set, two arms, arm length 150mm

Further configurations on request!

DLT-SA6100

USB-Based Digital Smart Motion Sensor For Screen Blanking Solution



Features

- Industrial-grade USB stick
- Accelerometer, magnetometer and gyro
- Screen blanking Software
- Wide operating temperature rang (-40°C to 80°C) for extreme environments
- Resistant against shocks and vibrations according to IEC60721-3-5

Introduction

Advantech DLT-SA6100 is a plug & play screen blanking solution, which can be installed and configured at lowest effort. DLT-SA6100 is a safety solution fitting to every vehicle, no extra wiring is needed, time for installation is reduced to a minimum. Designed to work under toughest conditions, operating temperature ranges from -40 °C to + 80 °C, DLT-SA6100 has a high shock and vibration resistance to withstand the bumpiest driveway.

Specifications

System	Sensors	Gyro Accelerometer Magnetometer
Software	Operating Software	Windows 7 Professional (32-Bit und 64-Bit) Windows Embedded Standard 7 (32-Bit und 64-Bit) Windows Embedded 8.1 Industry Pro (32-Bit und 64-Bit) Windows Embedded 8 Standard (32-Bit und 64-Bit) Windows 10 IoT Enterprise (32-Bit und 64-Bit)
Sensitivity	Sensitivity Settings	Adjustable, 6 sensitivity levels
Dimensions		42.1 x 16.8 x 8 mm (1.66 x 0.66 x 0.31 in)
Weight		8g
Communication	USB Version	USB 2.0
Environmental	Temperatur Range	-40°C to 80°C
	Shock and Vibration	Resistant according to IEC60721-3-5
Certifications		CE Immunity Class A, Emission Class B/FCC Class B (for EU and USA)

Ordering Information

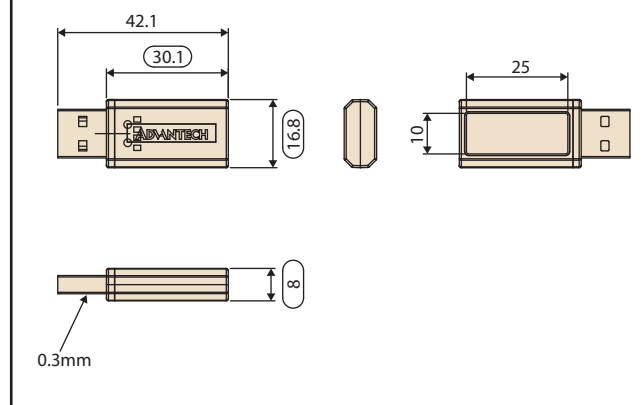
Part Number	Description
DLT-SA6100-0000	USB-based intelligent motion sensor for screen blanking solution

Packing List

- USB-Stick
- Quick Start Guide with Download Link

Dimensions

Unit: mm



DLT-V72 Series

Rugged X86-Based Vehicle-Mounted Terminal



Features

- 10.4/12.1" color TFT display
- Abrasion-resistant touchscreen
- IP66 rating for protection from dust and water ingress
- 5M3 certification for shock and vibration tolerance
- Wide operating temperature range (-30 ~ 50 °C/-22 ~ 122 °F) for extreme environments
- Optional uninterruptible power supply via backup battery (supports up to 20 minutes operation)
- Optional screen defroster, ideal for cold chain and cold storage applications

Introduction

DLT-V72 is a rugged vehicle-mounted terminal designed for logistics applications and to provide maximum system uptime. Powered by an Intel® Atom™ E3845 quad-core, 1.91 GHz, processor with 4 GB RAM, DLT-V72 supports a wide operating temperature range (-30 ~ 50 °C/-22 ~ 122 °F) to withstand operation in extreme industrial environments (from hot and humid, to dry freezer environments). The integrated Advantech low-profile antenna offers excellent transmission capabilities in a compact form factor. Meanwhile the touchscreen with flexible touch control ensures easy input and even supports gloved operation.

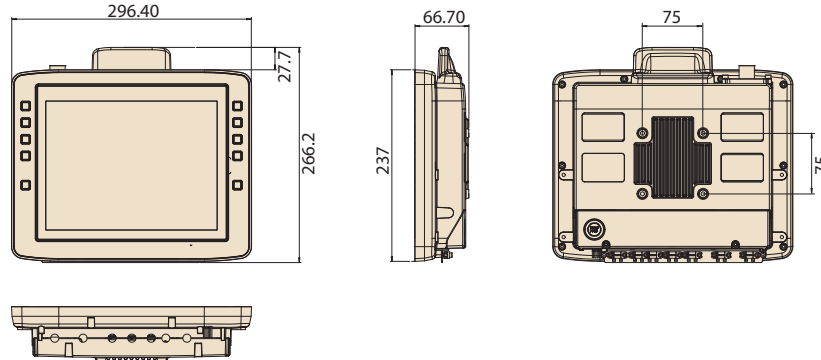
Specifications

System	CPU	Intel® Atom™ E3845 quad-core, 1.91 GHz, 4 GB RAM
	Memory	8GB - 256GB CFast
Dimensions	DLT-V7210	296.4 x 266.2 x 66.70 mm (11.67 x 10.48 x 2.63 in)
	DLT-V7212	334.4 x 294.4 x 68.7 mm (13.17 x 11.59 x 2.70 in)
Weight	DLT-V7210	3.7 kg (8 lb) without battery pack/antenna/accessories
	DLT-V7212	4.65 kg (10 lb) without battery pack/antenna/accessories
Housing		Completely sealed, fanless design made of coated aluminum
Display	DLT-V7210	10.4" XGA color TFT with 1024 x 768 resolution and 400 cd/m ² brightness
	DLT-V7212	12.1" XGA color TFT with 1024 x 768 resolution and 500 cd/m ² brightness
Touchscreen	Type	- Resistive touchscreen with optional screen defroster - Projective capacitive (P-CAP) touchscreen with multi-touch control
Control Buttons	Front Panel	10 x control buttons
Software	Operating System	Windows 10 IoT Enterprise, Windows 7 Pro, Windows Embedded 8.1 Industry Pro, Windows Embedded Standard 7, Windows Embedded 8 Standard, Debian-based Linux, IGEL Linux, Android 7.1.2
	Emulations (Third-Party)	VT100, VT220, IBM 5250, TN 3270, Citrix Client®, Freefloat Access One
Communication	Wi-Fi	Wi-Fi IEEE 802.11 a/b/g/n (optional)
	LAN	Ethernet 10/100/1000 Mbit/s
	WPAN	Bluetooth (optional)
Interfaces	Serial	2 x RS-232, COM1 with switchable 5 V _{DC} /RI
	USB	4 x USB 2.0 (Hi-Speed™) bootable, 1 x service USB 3.0 (Super-Speed™)
	RSMA	1 x RSMA for external Wi-Fi antenna (optional)
Audio		1 x speaker integrated
Power Supply		12/24/48 V _{DC} nominally Automatic Power On/Off function via vehicle ignition with optional UPS (20 minutes typical); battery life may vary according to load
Environmental	IP Rating	IP66 rating for the entire system
	Operating Temperature	-30 ~ 50 °C (-22 ~ 122 °F)
	Relative Humidity	10 to 90% at 40 °C (104 °F), non-condensing
	Shock/Vibration	5M3 (EN 60721-3-5) and MIL-STD 810F (US highway truck vibration exposure)
Certifications	Touchscreen Durability	IK 08
		CE Immunity Class A, Emission Class B/FCC Class B (for EU and USA), BSMI/NCC (for Taiwan), MIC/VCCI (for Japan), CCC/SRRC (for China)

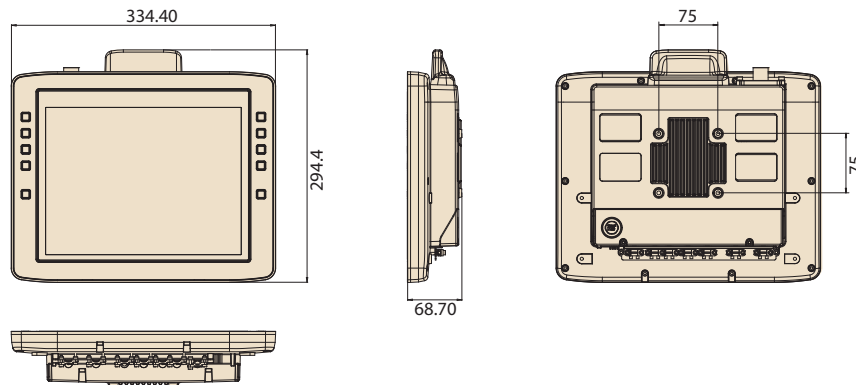
Dimensions

Unit: mm

DLT-V7210



DLT-V7212



Ordering Information

Part Number	Description	CPU	Memory	Storage	Wi-Fi	BT	GPS	3G	OS	OS language
DLV7210-7BL170000	DLT-V7210R res., WES7P APAC, 32GB MLC CFAST	Intel Atom E3845 Quad Core 1.91GHz	4GB	32GB	V	X	X	X	WES7	APAC (English, Japanese, Chinese trad., Chinese simpl.)
DLV7212-7BM1P0000	DLT-V7212R res., WIN7 Pro CHN, 64GB MLC CFAST	Intel Atom E3845 Quad Core 1.91GHz	4GB	64GB	V	X	X	X	WIN7P	CHN (Chinese simpl.)

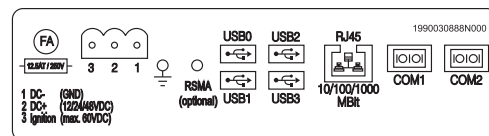
Further configurations on request!

Optional Accessories

Part Number	Description
DL-MTK009	Mounting bracket mobile
DL-MTRM004	RAM-Mount Set, one arm, arm length 130mm
DL-MTRM003	RAM-Mount Set, one arm, arm length 215mm
DL-MTRM001	RAM-Mount Set, two arms, arm length 150mm

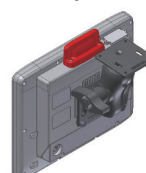
Further configurations on request!

I/O Connectors

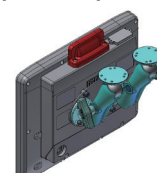


Mount Kit Options

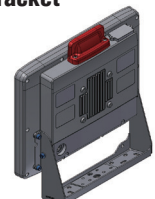
RAM-Mount Set
(one arm)



RAM-Mount Set
(two arms)



Mobile Mounting
Bracket



DLT-V83 Series

Rugged, High-Performance Vehicle-Mounted Terminal



Features

- 10/12/15" color TFT display
- Intel® Core™ i5-4300U/Celeron® 2980U dual-core processor
- Rugged, IP66-rated design with 5M2/5M3 certification
- Fully configurable to support specific application requirements
- Impact tolerant, abrasion-resistant touchscreen with IK08 classification
- Integrated uninterruptible power supply (supports up to 10 minutes operation)
- Wide operating temperature range (-30 ~ 50 °C/-22 ~ 122 °F) for extreme environments
- Latest WLAN standard for seamless roaming
- WWAN for outdoor operations

Introduction

The DLT-V83 series are rugged vehicle-mounted terminals designed to increase productivity and maximize system uptime for logistics applications. Powered by an Intel® Core™ i5/ Celeron® processor, DLT-V83 terminals support a wide operating temperature range (-30 ~ 50 °C/-22 ~ 122 °F) to withstand operation in extreme industrial environments (from hot and humid, to dry freezer environments). Deployment of this series ensures data integrity and integration across all logistics operations. Furthermore, the high system configurability, connectivity, and interface diversity allows the terminals to be easily customized to support specification application requirements.

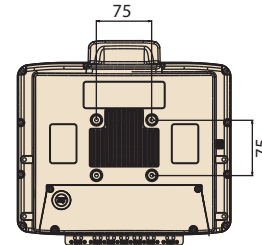
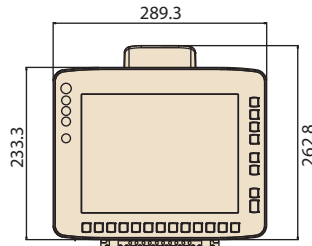
Specifications

System	CPU	Intel® Core™ i5-4300U dual-core, 1.9 GHz, with 4/8 GB RAM Intel® Celeron® 2980U dual-core, 1.6 GHz, with 4/8 GB RAM
	Memory	8/16/32/64/128/256 GB CFAST 2.5" SSD with 128 GB (optional)
Housing		Coated aluminum with completely sealed, fanless design
Dimensions (W x H x D)	DLT-V8310	289.3 x 262.8 x 89 mm (11.39 x 10.35 x 3.50 in)
	DLT-V8312	328.4 x 293.9 x 94.7 mm (12.93 x 11.57 x 3.73 in)
	DLT-V8315	390 x 342 x 98 mm (15.35 x 13.46 x 3.86 in)
Weight	DLT-V8310	4.3 kg (9.47 lb) without antenna
	DLT-V8312	5.5 kg (12.12 lb) without antenna
	DLT-V8315	6.2 kg (13.66 lb) without antenna
Display	DLT-V8310 (i5 and Celeron Models)	10.4" XGA color TFT with 1024 x 768 resolution and 400 cd/m ² brightness
	DLT-V8310 (Celeron Model)	10.4" SVGA color TFT with 800 x 600 resolution and 400 cd/m ² brightness
	DLT-V8312 (i5 and Celeron Models)	12.1" XGA color TFT with 1024 x 768 resolution and 500 cd/m ² brightness
	DLT-V8315 (i5 and Celeron Models)	15.1" XGA color TFT with 1024 x 768 resolution and 400 cd/m ² brightness
Touchscreen	Type	High-impact tolerant touchscreens available with two control types: - Resistive touchscreen with 5/26 x control buttons - Projected capacitive multi-touch screen with 9 x control buttons - Sunlight-readable resistive touchscreen with 26 x control buttons (Celeron model only)
	Control Buttons	Front Panel 5/9/26 x control buttons
Software	Operating System	Windows 10 IoT Enterprise, WES 7, Win7 Pro, WE 8.1 Industry Pro(on request), Linux (on request)
	Emulations (Third-Party)	VT100, VT220, IBM 5250, TN 3270, Citrix Client®, Freefloat Access One
Communication	WLAN	WLAN IEEE 802.11 a/b/g/n/ac (Optional)
	WWAN	WWAN (LTE, UMTS, HSPA+, GSM, GPRS, EDGE) (Optional)
	LAN	Ethernet 10/100/1000 Mbit/s with optional secondary Ethernet
	WPAN	Bluetooth 4.2 (Optional)
I/O Interfaces	Serial	2 x RS-232, alternatively 1 x RS-232 and RS-422/485
	USB	4 x USB 2.0 (Hi-Speed™) bootable, 1 x service USB
	CAN	Optional
	External Antennas	2 x RSMA for WLAN, 2 x SMA for WWAN (optional)
Audio		1 x integrated speaker (2W)
Power Supply (Internal)		12/24/48 V _{DC} nominal voltage with automatic Power On/Off functionality via vehicle ignition and optional uninterruptible power supply (10 minutes typical); 110/230 V _{AC} , 50/60 Hz, optional for DLT-V8315
Environmental	IP Rating	IP66 rating for the entire system
	Touchscreen Durability	IK08 according to IEC 62262
	Operating Temperature	-30 ~ 50 °C (-22 ~ 122 °F)
	Relative Humidity	10 to 90% at 40 °C (104 °F), non-condensing
Certification	Shock/Vibration	5M3(EN 60721-3-5) for 10" and 12", 5M2 (EN 60721-3-5) for 15" and MIL-STD 810F (US highway truck vibration exposure)
		CE Immunity Class A, Emission Class B/FCC Class B, CCC (for China), MIC (for Japan)

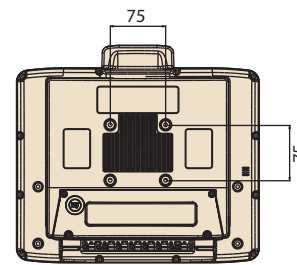
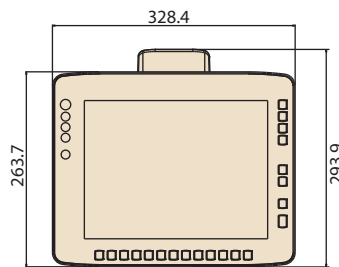
Dimensions

Unit: mm

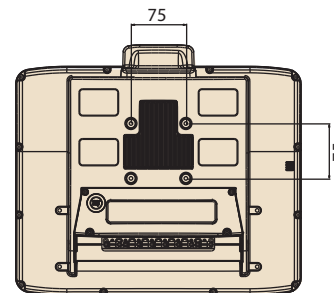
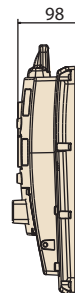
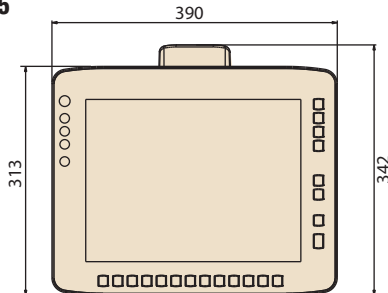
DLT-V8310



DLT-V8312



DLT-V8315



Ordering Information

Part Number	Description	Display	CPU	Touch	Power
DLV8310-1G100F0	DLT-V8310C FL barebone 4GB res SVGA 26key	10.4" SVGA	Intel® Celeron® 2980U Dual Core 1.6 GHz	Resistive touch	DC
DLV8312-1A100F0	DLT-V8312C FL barebone 4GB res XGA 5key	12.1" XGA	Intel® Celeron® 2980U Dual Core 1.6 GHz	Resistive touch	DC
DLV8315-4J300F0	DLT-V8315i5 FL barebone 8GB PCT XGA 9key	15.1" XGA	Intel® Core™ i5- 4300U Dual Core 1.9 GHz	PCT Touch	AC

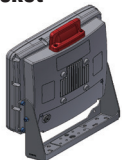
Further configurations on request!

Optional Accessories

Part Number	Description
DL-MTKT009	Mobile Mounting Bracket
DL-MTRM004	RAM-Mount Set, one arm, arm length 130mm
DL-MTRM003	RAM-Mount Set, one arm, arm length 215mm
DL-MTRM001	RAM-Mount Set, two arms, arm length 150mm

Further configurations on request!

Mobile Mounting Bracket



RAM-Mount Set (one arm)

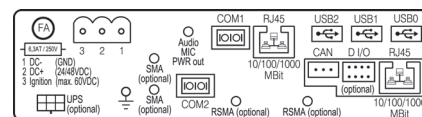


RAM-Mount Set (two arms)

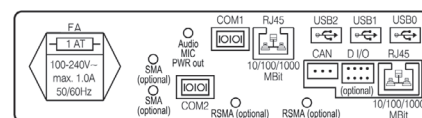


I/O Connectors

VDC



VAC –option only available for DLT-V8315



DLT-V4108

Vehicle-Mounted Terminal with Integrated Keyboard



Features

- Intel® Atom™ E3826 dual-core, 1.46 GHz, processor
- 8" widescreen color TFT display with high brightness (750 nits)
- Rugged, IP65-rated design with 5M3 certification and integrated keyboard
- LTE, GPS, Wi-Fi®, and Bluetooth® capabilities
- Integrated uninterruptible power supply (supports up to 15 minutes operation)
- Wide operating temperature range (-30 ~ 50 °C/-22 ~ 122 °F) with support for cold storage applications

Introduction

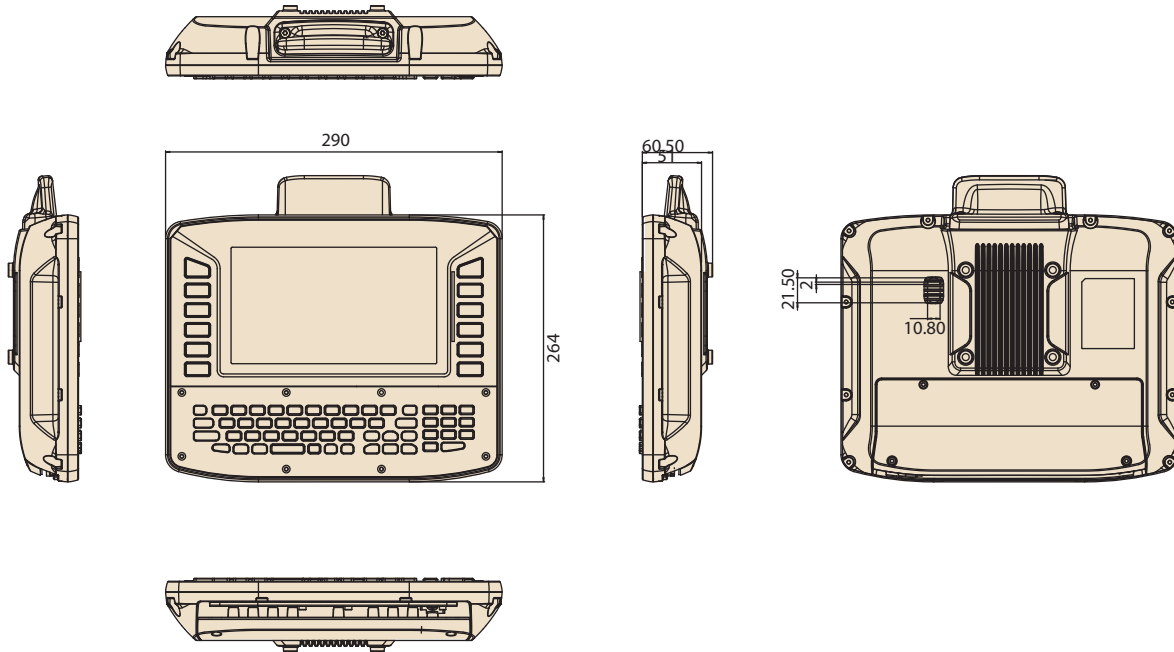
DLT-V4108 is a rugged vehicle-mounted terminal with integrated keyboard; designed to provide maximum service life for logistics applications. With its 5M3 certification and IP65 rating for protection from water and dust ingress, and support for a wide operating temperature range (-30 ~ 50 °C/-22 ~ 122 °F), DLT-V4108 can withstand operation in extreme industrial environments. The terminal's slim and compact form factor make it suitable for installation in limited spaces, such as narrow vehicle cabins. Furthermore, the integrated ergonomic keyboard (which can be rapidly replaced onsite for easy maintenance) combined with the 8" touchscreen with projected capacitive touch control (which also supports gloved operation) ensure convenient data input and rapid real-time data collection. Finally, the inclusion of Wi-Fi®, LTE, and Bluetooth® technologies offer reliable connectivity and communication for optimized logistics management.

Specifications

System	CPU	Intel® E3826 dual-core, 1.46 GHz, with 4 GB RAM
	Memory	32 GB MLC-Fast
Housing		Coated aluminum with completely sealed, fanless design
Dimensions (W x H x D)		290 x 264 x 60.5 mm (11.42 x 10.39 x 2.38 in)
Weight		3.4 kg (7.49 lb) without antenna
Display		8" color TFT with 1024 x 600 resolution and 750 cd/m ² brightness
Touchscreen	Type	Projected capacitive multi-touch
Control Buttons	Front Panel	12 x control buttons
	Keyboard	QWERTY version
Software	Operating System	Windows 10 IoT Enterprise, Windows 7/8 Pro, WES7, WE8S, Windows Embedded Compact 7*
Communication	Wi-Fi	Wi-Fi IEEE 802.11 a/b/g/n
	WWAN	WWAN (GSM, GPRS, EDGE, UMTS, HSPA, LTE) (optional)
	LAN	Ethernet 10/100/1000 Mbit/s with optional secondary Ethernet
	WPAN	Bluetooth
Location-Based Services		GPS (optional)
I/O Interfaces	Serial, USB	1 x RS-232 with 12 V _{DC} , 1 x USB 2.0 host Type A, and 1 x service USB 2.0 with additional USB and RS-232 via master harness cable
	CAN	Via master harness cable
	External Antennas	1 x RSMA for Wi-Fi, 1 x SMA for WWAN, and 1 x SMA for GPS
Audio		1 x speaker integrated 1 x Mic-In, 1 x Line-In, and 1 x Line-Out via master harness cable
Power Supply (Internal)		12/24/48 V _{DC} nominal voltages (9 ~ 60 V _{DC} min./max.) with automatic Power On/Off functionality via vehicle ignition and optional uninterruptible power supply (15 minutes typical)
Environmental	IP Rating	IP65 rating for the entire system
	Touchscreen Durability	IK 06 according to IEC 62262
	Operating Temperature	-30 ~ 50 °C (-22 ~ 122 °F)
	Relative Humidity	10 to 90% at 40 °C (104 °F), non-condensing
Certification	Shock/Vibration	5M3 (EN 60721-3-5) and MIL-STD 810F (US highway truck vibration exposure)
		CE Immunity Class A, Emission Class B/FCC Class B, CCC (for China)

Dimensions

Unit: mm



Ordering Information

Part Number	Description	CPU	Memory	Storage	Wi-Fi	BT	GPS	LTE	OS	OS language
DLV4108-7PL210W0E	DLT-V4108 32G Cfast/Win10IoT/WIFI	Intel Atom E3826 Dual Core 1.46GHz	4GB	32GB	V	V	X	X	Win10IoT	English, German, Chinese simpl.
DLV4108-7PL21FW0E	DLT-V4108 32G Cfast/Win10IoT/WIFI+GPS+LTE(EU)	Intel Atom E3826 Dual Core 1.46GHz	4GB	32GB	V	V	V	V	Win10IoT	English, German, Chinese simpl.
DLV4108-7PL21DW0E	DLT-V4108 32G Cfast/Win10IoT/WIFI+GPS+LTE(China)	Intel Atom E3826 Dual Core 1.46GHz	4GB	32GB	V	V	V	V	Win10IoT	English, German, Chinese simpl.
DLV4108-7PL21SW0E	DLT-V4108 32G Cfast/Win10IoT/WIFI+GPS+LTE(US)	Intel Atom E3826 Dual Core 1.46GHz	4GB	32GB	V	V	V	V	Win10IoT	English, German, Chinese simpl.
DLV4108-7PL2MOW1E	DLT-V4108 32G Cfast/WIFI/32G Cfast/ WEC7 English	Intel Atom E3826 Dual Core 1.46GHz	4GB	32GB	V	V	X	X	WEC7	English
DLV4108-7PL2MOW0E	DLT-V4108 32G Cfast/WIFI/32G Cfast/ WEC7 Chinese simpl.	Intel Atom E3826 Dual Core 1.46GHz	4GB	32GB	V	V	X	X	WEC7	Chinese simpl.

* Further configurations on request!

Packing List

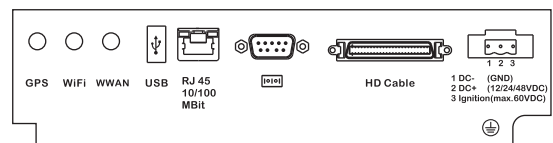
- Power Cable VDC 3m

Optional Accessories

Part Number	Description
DL-CMEMT70129800	RAM-Mount Set short 2.25" 1 Arm 130mm
DL-CMEMT70129700	RAM-Mount Set long Arm 215mm
DL-CMEMT70119300	RAM-Mount Set long double 1.5" Arm 150mm
DL-WFAK70277200	Wi-Fi antenna kit, remote
1750007724-01	GPS, 4G/3G/2G and Wi-Fi Antenna
96554108000	ASS'Y Harness Cable kit for DLV-4108

* Further configurations on request!

I/O Connectors



DLT-V6210

Rugged Vehicle-Mounted Terminal with Sunlight-Readable Display



Features

- Intel® Atom™ E3825 dual-core, 1.33 GHz, with 4 GB RAM
- 10.4" XGA color TFT display with 600/1300 cd/m² brightness for both indoor and outdoor applications
- Rugged, IP65-rated design with 5M3 certification
- Impact-tolerant, abrasion-resistant projected capacitive touchscreen
- Wide operating temperature range (-30 ~ 50 °C/-22 ~ 122 °F) with support for cold storage applications

Introduction

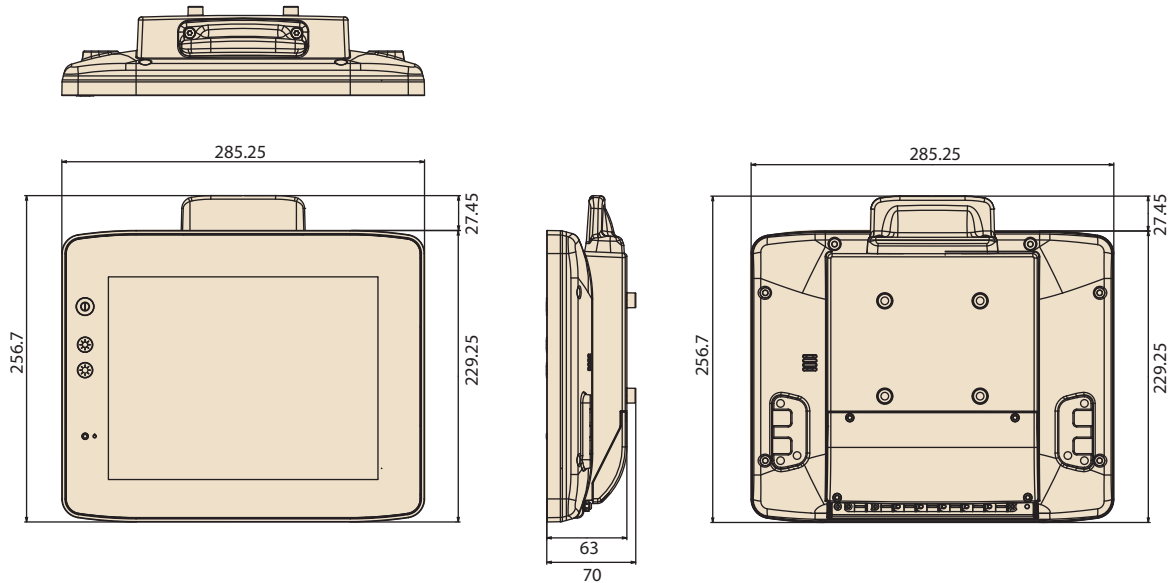
DLT-V6210 is a rugged vehicle-mounted terminal designed for efficient logistics applications. With its IP65-rating for protection from water and dust ingress, wide operating temperature range (-30 ~ 50 °C/-22 ~ 122 °F), rugged design, as well as impact-tolerant, scratch-resistant projected capacitive multi-touch display, DLT-V6210 is built to withstand operation in extreme industrial environments. Moreover, the terminal's sunlight-readable display supports operation in direct sunlight for outdoor applications. Finally, a low-profile external Wi-Fi antenna is included to ensure reliable connectivity for logistics and fleet management.

Specifications

System	CPU	Intel® Atom™ E3825 dual-core, 1.33 GHz, with 4 GB RAM
	Memory	32 GB CFast
Dimensions (W x H x D)		285.25 x 256.7 x 70 mm (11.23 x 10.11 x 2.76 in)
Weight		3.2 kg (7.05 lb)
Housing		Coated aluminum with completely sealed, fanless design
Display		10.4" XGA color TFT with 1024 x 768 resolution and 600/1300 cd/m ² brightness
Touchscreen	Type	Projected capacitive touchscreen with multi-touch control
Control Buttons	Front Panel	3 x control buttons (1 x power, 1 x brightness up, 1 x brightness down)
Software	Operating System	Windows Embedded 8 Standard
Communication	Wi-Fi	Wi-Fi IEEE 802.11 a/b/g/n
	WPAN	Bluetooth 4.0
	LAN	2 x LAN RJ45 10/100/1000 Mbit/s
I/O Interfaces	Serial	1 x RS-232; 5 V _{DC}
	USB	2 x USB host Type A, 5 V _{DC} , 500 mA
	RSMA	1 x RSMA for external Wi-Fi antenna (optional)
Audio		1 x speaker integrated
Power Supply		12/24/48 V _{DC} nominal voltages with automatic Power On/Off functionality via vehicle ignition
Environmental	IP Rating	IP65 rating for the entire system
	Operating Temperature	-30 ~ 50 °C (-22 ~ 122 °F)
	Relative Humidity	10 to 95% at 25 °C (77 °F), non-condensing
	Shock/Vibration	5M3 (EN 60721-3-5) and MIL-STD 810F (US highway truck vibration exposure)
Touchscreen Durability		IK 08
		CE Immunity Class A, Emission Class B/FCC Class B (for EU and USA), BSMI/NCC (for Taiwan), TELEC (for Japan), CCC/SRRC (for China)
Certification		

Dimensions

Unit: mm



Ordering Information

Part Number	Description	CPU	Memory	Storage	Wi-Fi	BT	GPS	3G	OS	OS language
DLV6210-7PL170W0E	DLT-V6210 PCAP/32GB/600nits/WiFi/WES7	Intel Atom E3825 Dual Core 1.33GHz	4GB	32GB	V	V	X	X	WES7	10 MUI (incl. English, German, Japanese, Chinese trad., Chinese simpl.)
DLV6210-7HL170W0E	DLT-V6210 PCAP/32GB/1300nits/WiFi/WES7	Intel Atom E3825 Dual Core 1.33GHz	4GB	32GB	V	V	X	X	WES7	10 MUI (incl. English, German, Japanese, Chinese trad., Chinese simpl.)
DLV6210-7PL110W0E	DLT-V6210 PCAP/32GB/600nits/WiFi/Win10IoT	Intel Atom E3825 Dual Core 1.33GHz	4GB	32GB	V	V	X	X	Win10IoT	English, German, Japanese, Chinese simpl.
DLV6210-7HL110W0E	DLT-V6210 PCAP/32GB/1300nits/WiFi/Win10IoT	Intel Atom E3825 Dual Core 1.33GHz	4GB	32GB	V	V	X	X	Win10IoT	English, German, Japanese, Chinese simpl.
DLV6210-7PL1P0W0E	DLT-V6210 PCAP/32GB/600nits/WiFi/Win7 Prof.	Intel Atom E3825 Dual Core 1.33GHz	4GB	32GB	V	V	X	X	WIN7P	10 MUI (incl. English, German, Japanese, Chinese trad., Chinese simpl.)
DLV6210-7HL1P0W0E	DLT-V6210 PCAP/32GB/1300nits/WiFi/Win7 Prof.	Intel Atom E3825 Dual Core 1.33GHz	4GB	32GB	V	V	X	X	WIN7P	10 MUI (incl. English, German, Japanese, Chinese trad., Chinese simpl.)
DLV6210-7PL1M0W0E	DLT-V6210 PCAP/32GB/600nits/WiFi/WEC 7	Intel Atom E3825 Dual Core 1.33GHz	4GB	32GB	V	V	X	X	WEC7	English
DLV6210-7HL1M0W0E	DLT-V6210 PCAP/32GB/1300nits/WiFi/WEC 7	Intel Atom E3825 Dual Core 1.33GHz	4GB	32GB	V	V	X	X	WEC7	English

Further configurations on request!

Packing List

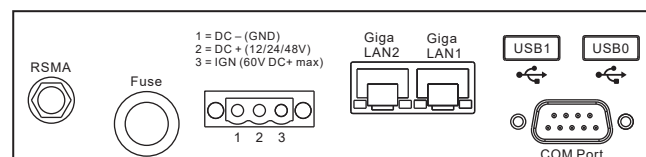
- Power Cable VDC 3m

Optional Accessories

Part Number	Description
DL-MEMT79375000	Mounting bracket mobile 15 grade fixed
DL-CMEMT70129800	RAM-Mount Set short 2.25" 1 Arm 130mm
DL-CMEMT70129700	RAM-Mount Set long Arm 215mm
DL-CMEMT70119300	RAM-Mount Set long double 1.5" Arm 150mm

Further configurations on request!

I/O Connectors



DLT-V6210

Rugged Vehicle-Mounted Terminal with Sunlight-Readable Display



Features

- Intel® Atom™ E3825 dual-core, 1.33 GHz, with 4 GB RAM
- 10.4" XGA color TFT display with 600/1300 cd/m² brightness for both indoor and outdoor applications
- Rugged, IP65-rated design with 5M3 certification
- IK08-certified touchscreen for impact tolerance and abrasion resistance
- Wide operating temperature range (-30 ~ 50 °C/-22 ~ 122 °F) to withstand extreme environments
- Support latest WLAN standard with seamless Wi-Fi roaming capability
- Support WWAN for outdoor operations

Introduction

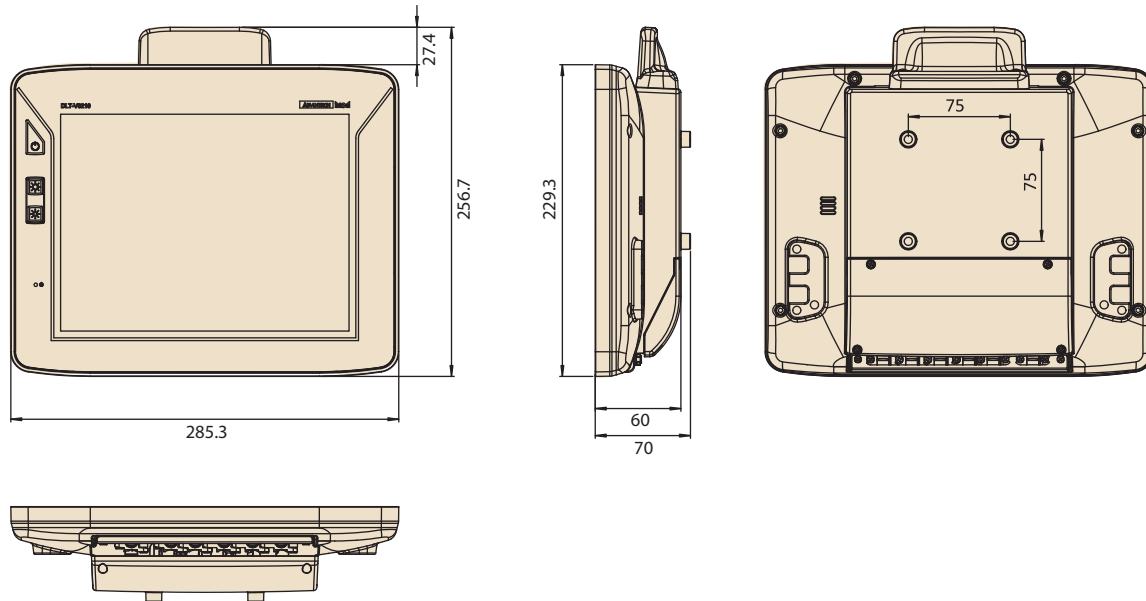
DLT-V6210 is a rugged vehicle-mounted terminal designed for efficient logistics applications. With its IP65-rating for protection from water and dust ingress, wide operating temperature range (-30 ~ 50 °C/-22 ~ 122 °F), rugged design, as well as impact-tolerant, scratch-resistant projected capacitive multi-touch display, DLT-V6210 is built to withstand operation in extreme industrial environments. Moreover, the terminal's sunlight-readable display supports operation in direct sunlight for outdoor applications. Finally, a low-profile external Wi-Fi antenna is included to ensure reliable connectivity for logistics and fleet management.

Specifications

System	CPU	Intel® Atom™ E3825 dual-core, 1.33 GHz, with 4 GB RAM
	Memory	32 GB CFast
Dimensions (W x H x D)		285.3 x 256.7 x 70 mm (11.23 x 10.11 x 2.76 in)
Weight		3.2 kg (7.05 lb)
Housing		Coated aluminum with completely sealed, fanless design
Display		10.4" XGA color TFT with 1024 x 768 resolution and 600/1300 cd/m ² brightness
Touchscreen	Type	Projected capacitive touchscreen with multi-touch control
Control Buttons	Front Panel	3 x control buttons (1 x power, 1 x brightness up, 1 x brightness down)
Software	Operating System	Windows 10 IoT Enterprise
Communication	WLAN	WLAN IEEE 802.11 a/b/g/n/ac (optional)
	WWAN	WWAN (LTE, UMTS, HSPA+, GSM, GPRS, EDGE) (optional)
	WPAN	Bluetooth 5.0
	LAN	2 x LAN RJ45 10/100/1000 Mbit/s
I/O Interfaces	Serial	1 x RS-232; 5 V _{DC}
	USB	3 x USB 2.0 host Type A, 5 V _{DC} , 500 mA
	External Antennas	1 x RSMA for WLAN, 2 x SMA for WWAN (optional)
	SIM Card	1 x mini SIM card slot
Audio		1 x integrated speaker (2W)
Power Supply		12/24/48 V _{DC} nominal voltages with automatic Power On/Off functionality via vehicle ignition
Environmental	IP Rating	IP65 rating for the entire system
	Operating Temperature	-30 ~ 50 °C (-22 ~ 122 °F)
	Relative Humidity	10 to 95% at 25 °C (77 °F), non-condensing
	Shock/Vibration	5M3 (EN 60721-3-5) and MIL-STD 810F (US highway truck vibration exposure)
	Touchscreen Durability	IK 08
Certification		CE Immunity Class A, Emission Class B/FCC Class B (for EU and USA), VCCI (for Japan), CCC/SRRC (for China)

Dimensions

Unit: mm



Ordering Information

Part Number	Description	CPU	Memory	Storage	Wifi	BT	GPS	3G	OS
DLV6210-7PL100WFO	DLT-V6210FL 600 nit/Barebone	Intel Atom E3825 Dual Core 1.33GHz	4GB	64GB	V	V	X	X	win 10
9768MDKT004	WLAN WWAN GPS Kit for EU	X	X	X	X	X	X	V	X
9768MDKT005	WLAN WWAN GPS Kit for USA	X	X	X	X	X	X	V	X
9768ANTN009	External WWAN Antenna 3M, WLAN Antenna 3M, GPS mouse 1.5M	X	X	X	X	X	V	X	X

Further configurations on request!

Packing List

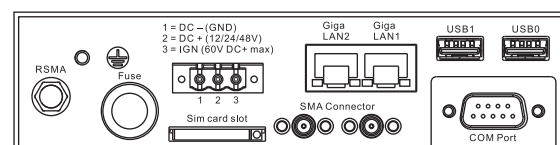
- Power Cable VDC 3m

Optional Accessories

Part Number	Description
DL-MTKT004	Mounting bracket 15° fixed
DL-MTRM001	RAM Mount double 1.5" (arm 150mm, tube mount)
DL-MTRM002	RAM Mount double arm 1.5" (2 arm 150mm)
DL-MTRM003	RAM-Mount long (arm 215mm/plate)
DL-MTRM004	RAM Mount short 2.25" (arm 130mm/plate)
DL-STYL010	Stylus with mounting, right, for PCT

Further configurations on request!

I/O Connectors



DLT-V7212 P+

Rugged X86-Based Vehicle-Mounted Terminal



Features

- 12.1" color TFT display
- Intel® Atom™ E3845 quad-core processor
- Projective capacitive (P-CAP) touchscreen with multi-touch control
- IP66 rating for water and dust resistance
- 5M3 certification for shock and vibration tolerance
- Impact tolerant, abrasion-resistant touchscreen with IK08 classification
- Wide operating temperature range (-30 ~ 50 °C/-22 ~ 122 °F) for extreme environments
- Optional uninterruptible power supply via backup battery (supports up to 20 minutes operation)
- Optional smart sensors for extended functions e.g. screen blanking for driving safety

Introduction

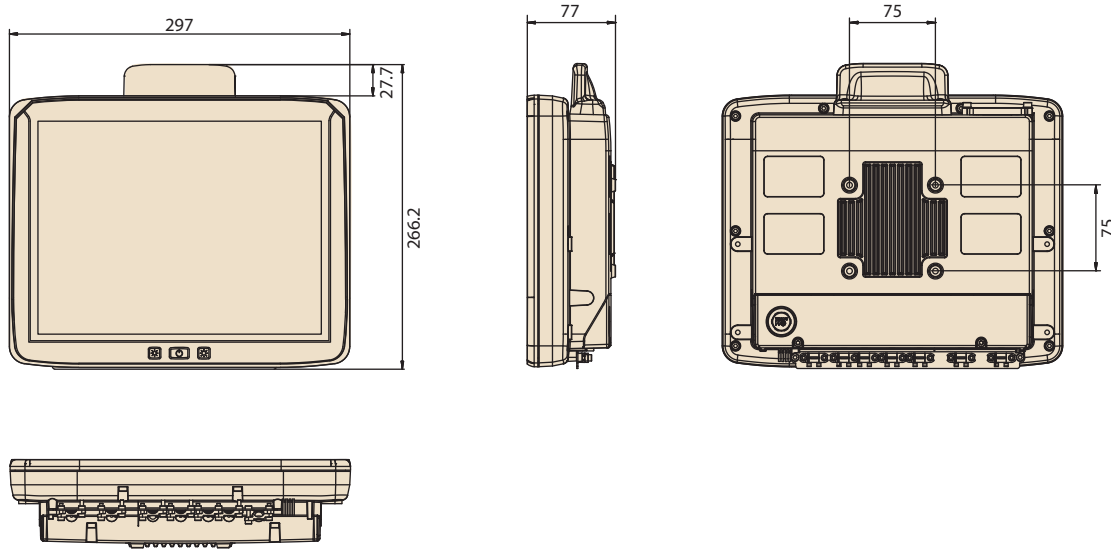
DLT-V7212 P+ is a rugged vehicle-mounted terminal designed for logistics applications and to provide maximum system uptime. The compact thin bezel design allows it to fit into the smallest vehicle cabin. DLT-V7212 P+ increases driving safety, as its compact design is reducing the visual field restrictions to a minimum. Powered by an Intel® Atom™ E3845 quad-core, 1.91 GHz, processor with 4 GB RAM, DLT-V7212 P+ supports a wide operating temperature range (-30 ~ 50 °C/-22 ~ 122 °F) to withstand operation in extreme industrial environments (from hot and humid, to dry freezer environments). The Advantech low-profile antenna offers excellent transmission capabilities in a compact form factor. The PCT touchscreen ensures easy input and supports gloved operation.

Specifications

System	CPU	Intel® Atom™ E3845 quad-core, 1.91 GHz, 4 GB RAM
	Memory	8GB - 256GB CFast
Dimensions		297 x 266 x 77 mm (11.69 x 10.47 x 3.03 in)
Weight		3.7 kg (8 lb) without battery pack/antenna/accessories
Housing		Completely sealed, fanless design made of coated aluminum
Display		12.1" XGA color TFT with 1024 x 768 resolution and 600 cd/m ² brightness
Touchscreen	Type	Projective capacitive (P-CAP) touchscreen, optical bonded with multi-touch control
Control Buttons	Front Panel	3 x control buttons
Software	Operating System	Windows 10 IoT Enterprise, Windows 7 Pro, Windows Embedded Standard 7, Debian-based Linux, IGEL Linux, Android 7.1.2
	Emulations (Third-Party)	VT100, VT220, IBM 5250, TN 3270, Citrix Client®, Freefloat Access One
Communication	WLAN	WLAN IEEE 802.11 a/b/g/n/ac (optional)
	WWAN	WWAN (LTE, UMTS, HSPA+, GSM, GPRS, EDGE) (optional)
	LAN	Ethernet 10/100/1000 Mbit/s
	WPAN	Bluetooth 4.2 (optional)
Interfaces	Serial	2 x RS-232, COM1 with switchable 5 V _{DC} /RI
	USB	4 x USB 2.0 (Hi-Speed™) bootable, 1 x service USB 3.0 (Super-Speed™)
	External Antennas	1 x RSMA for WLAN, 1 x SMA for WWAN (optional)
Sensors		Accelerometer, Gyro (optional)
Audio		1 x integrated speaker
Power Supply		12/24/48 V _{DC} nominally Automatic Power On/Off function via vehicle ignition with optional UPS (20 minutes typical); battery life may vary according to load
Environmental	IP Rating	IP66 rating for the entire system
	Operating Temperature	-30 ~ 50 °C (-22 ~ 122 °F)
	Relative Humidity	10 to 90% at 40 °C (104 °F), non-condensing
	Shock/Vibration	5M3 (EN 60721-3-5) and MIL-STD 810F (US highway truck vibration exposure)
	Touchscreen Durability	IK 08
Certifications		CE Immunity Class A, Emission Class B/FCC Class B (for EU and USA), CCC (for China)

Dimensions

Unit: mm

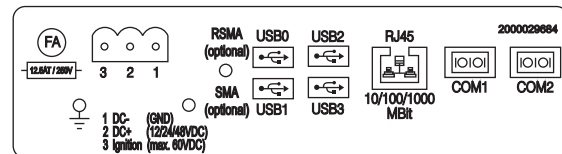


Optional Accessories

Part Number	Description
DL-MTK009	Mounting bracket mobile
DL-MTRM004	RAM-Mount Set, one arm, arm length 130mm
DL-MTRM003	RAM-Mount Set, one arm, arm length 215mm
DL-MTRM001	RAM-Mount Set, two arms, arm length 150mm

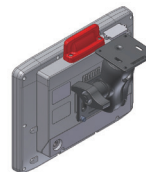
Further configurations on request!

I/O Connectors

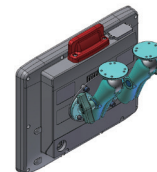


Mount Kit Options

RAM-Mount Set (one arm)



RAM-Mount Set (two arms)



Mobile Mounting Bracket

